

April 2026

Concrete & Pumps

Price list





Contents

Setting the standard	3
UNI-Products	4
UNI-Plus	5
UNI-Custom	6
Unicon EPDs	8
Emission-free delivery	10
Unicon production programme	12
Concrete prices	13
Fixed surcharges and extra services	18
Pumps	20
Pumping prices	22
Fixed surcharge and extra services	23
Pump overview	24
Pump policy	26
Terms of sale and delivery	28
Contact information	30

Setting the standard.



- We minimize our customers' risks
- We bring our customers to the forefront of climate requirements
- We are the partner that gives customers access to expertise

UNI PRODUCTS

Our unique products are your guarantee of good results. Every time.

We always strive to have a range of standard concretes that are at the forefront of developments when it comes to the lowest possible climate and environmental impact, without compromising on quality and strength.

Our range of UNI products is based on the CO₂-reduced cement FUTURECEM® in all permitted exposure classes, with a CO₂ footprint that is almost 30% lower compared to conventional cement.

At Unicon we also strive to use the fewest possible virgin raw materials in our concrete production. We do this by minimising spillage and over-production, and also reusing crushed concrete as aggregate in new concrete, where standards and local availability make it technically possible to do so.

In addition, we collect rain water at our plants, which is used for daily washing of our concrete trucks and then in concrete production, instead of pure drinking water.



New names, the same good products

Some of our products have been given new names. What they all now have in common is that the first part of their name is UNI, which is followed by an English name, to reflect our own English name United Concrete, abbreviated to Unicon.

The most important name changes relate to the products UNI-Green and UNI-Green Plus. The first one has long been our standard product, and for this reason it has now been given a more low-key name to reflect this - UNI-Versal. The second one has become UNI-Plus, as it is still a product type above the average, where we go to the extreme to achieve the lowest possible climate and environmental impact within the standards.



PROTECTION AGAINST DESICCATION

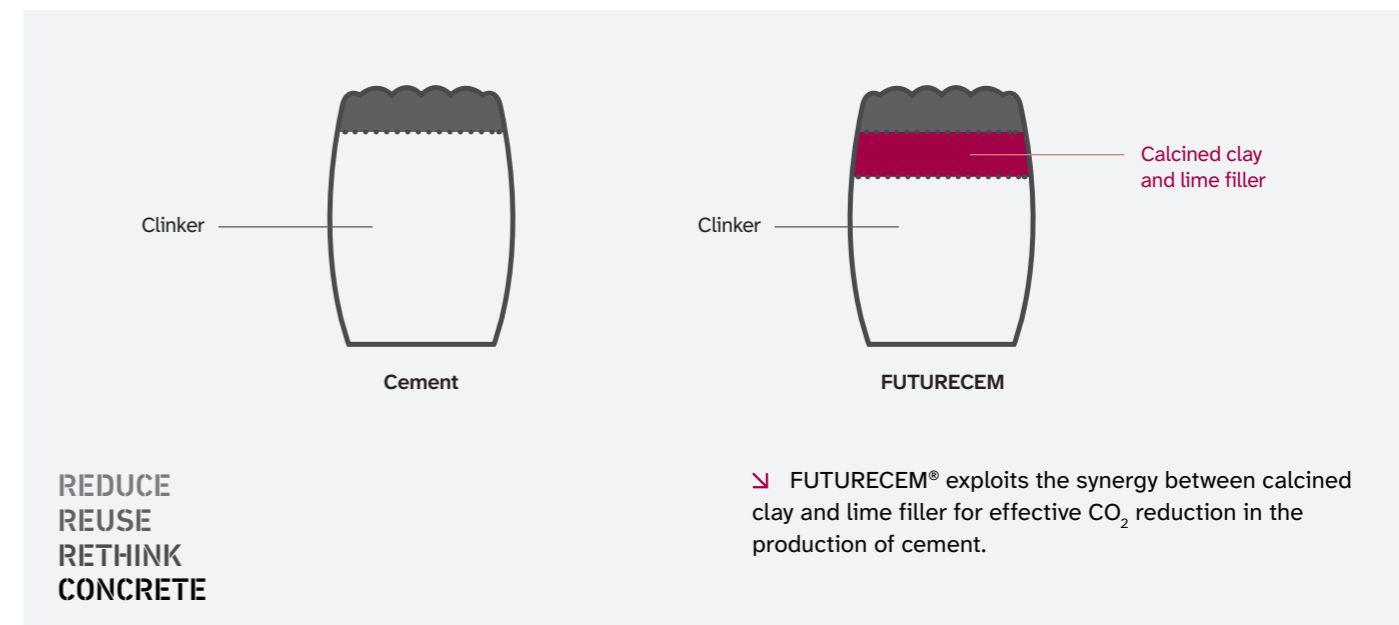


It's important to ensure that concrete is protected against desiccation. When you use our UNI products based on CO₂-reduced FUTURECEM® cement, you should pay particular attention to this as - all things being equal - they are more sensitive to desiccation compared with conventional concrete made with RAPID cement. This applies especially to surfaces that are cast in windy and sunny conditions, where the air moisture is low and the temperature is high.

It is therefore recommended that you always provide desiccation protection in the form of a wax-based curing or plastic immediately after concreting.

We have provided guidance on the correct way to protect against desiccation. Scan the QR code for more information.

How we reduce the carbon footprint of our concrete



FUTURECEM® is the result of several years of research and a targeted reduction of the CO₂-burdening part of the cement content in concrete. Since the 70s, Unicon has used pozzolanic materials such as fly ash and microsilica to reduce the cement content in concrete in general. In fact, 4K concrete, which later became part of Unicon, was among the first to use fly ash in Denmark. As coal-fired powerplants are phased out and ferrosilicon production decreases, the availability of fly ash and microsilica will decrease, and there will therefore be a need for new replacement materials of the same high quality or new cement types.

FUTURECEM® is a so-called Portland composite cement with the notation CEM II/B-M(Q-LL) 52.5 N (LA). In this cement type, approximately 30% of the CO₂-emitting cement clinker has been replaced with calcined clay and lime filler.

Because these components have a significantly lower CO₂ footprint, a CO₂ saving of approximately 29% is achieved in FUTURECEM®.

However, concrete does not consist exclusively of cement, which is why an approximately 25% CO₂ equivalent reduction can be achieved in the concrete compared to standard concrete with Rapid cement.

Unicon uses FUTURECEM® as standard in a wide range of our concrete products.

Normally, cement clinker will lead to a loss of strength, but precisely the patented combination of calcined clay and lime filler in FUTURECEM® achieves a comparable compressive strength, as the components in the cement react with each other and create a synergistic effect. UNI products with FUTURECEM®, such as UNI-Versal, simply provide the same strength and ability as traditional concrete, while paving the way for significant CO₂ reductions every time a building is cast.

At Unicon we have big ambitions with our portfolio of UNI-Versal concretes, which are now the new standard.

But it is not only UNI-Versal concrete in Passive and Moderate environmental impact where Unicon uses FUTURECEM® as standard, dive into our product range and see where else you can help make a difference.



UNI-Plus

Our new innovative flagship is called UNI-Plus. It is a concrete series beyond the ordinary, where we push the limits to achieve the lowest possible climate and environmental impact within the standards.

Our UNI-Plus concrete series is based on the CO₂-reduced cement FUTURECEM®, with a CO₂ footprint that is almost 30% lower compared to conventional cement. In addition, a high content of cement-substituting additives such as fly ash, resulting in a further reduction in the CO₂ footprint.

The result is a product with a significantly lower CO₂ footprint compared to the industry average for similar conventional concrete in 2020. The UNI-Plus concrete series is initially limited to use in passive and moderate environmental impact.

But it is not only about CO₂ reductions. UNI-Plus is also a result of our circular agenda, where we ensure the highest possible resource efficiency. Among other things, by using crushed process aggregates where possible.

Worth waiting for

The reduced climate and environmental footprint of the UNI-Plus concrete series gives your construction project great advantages – especially from July 2025, when the stricter climate requirements for new construction came into effect.

Its mechanical properties, including concrete strength, take a little more time to develop, and for this reason the compressive strength of the UNI-Plus series is documented after 56 days, not just 28 days. It may therefore be necessary to adjust your building planning to take account of the concrete's slower strength development, but by including this in your time plan you can achieve large CO₂ savings and environmental benefits.

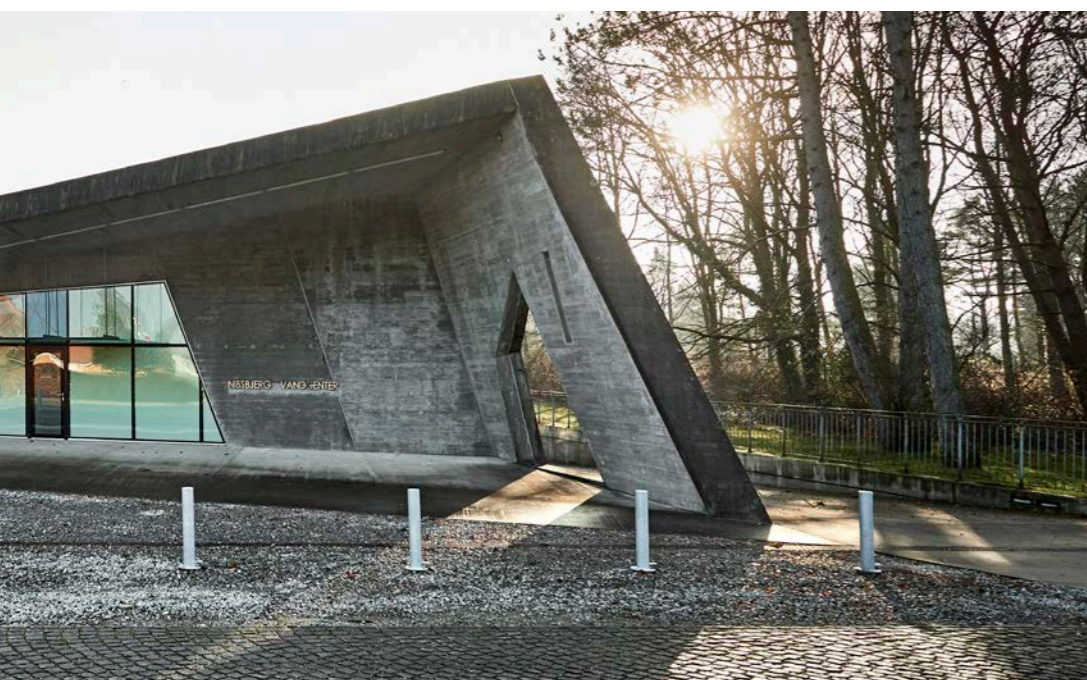
UNI-Plus is worth waiting for.



53%

CO₂-reduction

*UNI-Plus P25 compared to P25 concrete from the Building Regulations Annex 2, Table 7.



Find out more about UNI-Plus at unicon.dk

Delivered to Nybyggerne 2025 on TV2



Nybyggerne is a popular Danish TV 2 program where four couples compete to renovate and furnish their own house, and the winners receive the house as a prize.

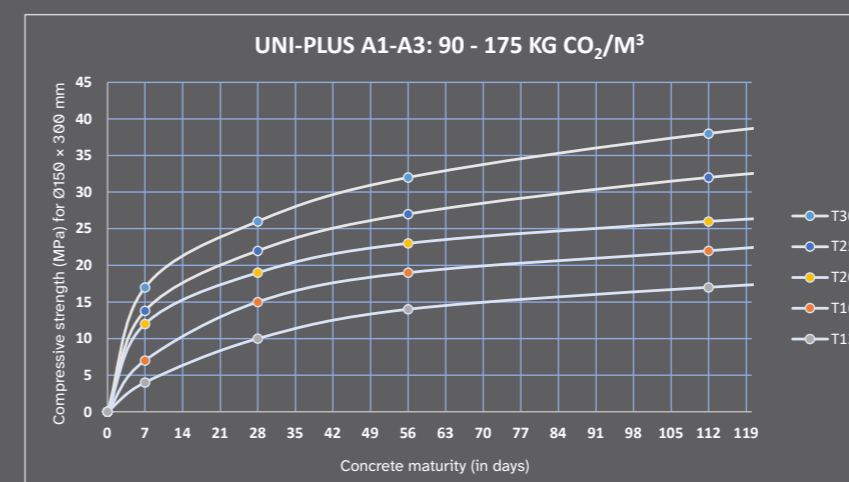
Quality, UNI-Plus is delivered as standard in 5 strength classes:

- Cylinder compressive strength 12 MPa, 16 MPa, 20 MPa, 25 MPa and 30 MPa documented after 56 days of maturity
- It is possible to have delivered both as slump concrete and Lava concrete, although Lava is not below strength class 20 MPa.

Applications, UNI-Plus can be used for, examples:

- Blinding concrete
- Earth-covering foundations where the load-bearing capacity has been proven without the use of reinforcement
- Ballast concrete

Unicon A/S is system certified according to DS/EN ISO 9001 and product certified according to EN 206 and DS/EN 206 DK NA. The certificates are issued by the accredited certification body Dancert A/S and can be downloaded at www.unicon.dk.



Execution and finishing

General rules for planning, execution and finishing must be observed. However, attention should be paid to the slower rate of strength development, all else being equal.

UNI-Plus products are not normally suitable for pumping and will instead be supplied by conveyor belt or chute.



UNI-CUSTOM

New climate requirements
need tailored solutions



With UNI-Custom we create tailor-made solutions for your project.

The new and stricter climate requirements of the building regulations make individual construction projects even more complex, and place greater demands on developers and contractors. The potential for achieving CO₂ savings will vary from project to project, and customised solutions will therefore play an even bigger part in the construction.

There are often significant CO₂ reductions to be made within the standards if the concrete structures are assigned the right exposure class and hence the right environmental impact. There's no reason to use a better concrete type than the type that is strictly necessary. And UNI-Plus will make further contributions to CO₂ reduction wherever possible.

With UNI-Custom, we therefore offer a concreting solution that is tailored to the individual construction project, and hence helps to meet the stricter CO₂ requirements of the building regulations - or even set entirely new standards for low-emissions building with concrete.

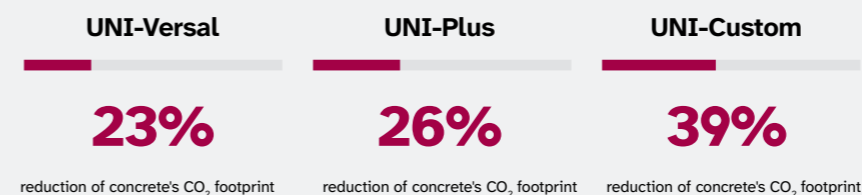
In cooperation with the customer, we consider the project's concrete specifications, including its environmental impact and the exposure classes for the structures, which enables us to identify and calculate potentials for optimisation of both concrete and choice of materials. In this way, we find the most suitable concrete for the project's purposes, while reducing the CO₂ footprint as far as possible.

Creating CO₂-reducing solutions is part of Unicon's DNA, and our continuous work to produce concrete with the lowest possible CO₂ footprint goes back a long way.

Our FUTURECEM®-based standard concretes are a result of this, and our efforts to create new products with an even lower CO₂ footprint continue - in close cooperation with cement producer Aalborg Portland, as well as visionary developers who, like us, are ready to go the extra mile to reduce their CO₂ footprint and environmental impact.

Examples of CO₂ reduction in a warehouse

Unicon's concrete solutions make it simple to reduce the CO₂ footprint to better meet the demands of future construction.



*Compared with CO₂ values from the Building Regulations, Appendix 2, Table 7.

Warehouse (1,843 m²) 469 M3 BETON

Concrete types P20, M30 and M35	kg CO ₂ /m ² /år
Table 7 (BR18)	1.68
UNI-Custom solution	1.03
Reduction	0.65
Total CO ₂ eq. savings	60,424 kg



FROM
8.1 KG/M²/YR

TO
7.5 KG/M²/YR

Example of reduction with UNI-Custom

Concrete for future construction

Concrete is one of the most basic materials in the construction sector, but in order to meet the requirements of the future, we must rethink how to use it. UNI-Custom is about customised solutions that can optimise material consumption and CO₂ reduction, and at the same time minimise overperformance.

Future construction requires more than just adaptation to the rules - it's about creating innovative solutions that set new standards for both sustainability and building technology.



Find out more about
UNI-Custom at unicon.dk

UNICON'S EPDS

An EPD (environmental product declaration) contains information on a product's impact on the environment throughout its life cycle. With the stricter climate requirements of the building regulations, EPDs are more important than ever before - and at Unicon we have the documentation in place.

An EPD is broken down into several phases:

- 1. Production (A1-A3):** Includes extraction of raw materials, transportation of materials to the place of production, and manufacturing of the product.
- 2. Building process (A4-A5):** Covers transportation of the product to the building site, and its installation.
- 3. Utilisation phase (B1-B7):** Covers the product's utilisation, maintenance, repair and energy consumption during the period of utilisation.
- 4. End of life cycle (C1-C4):** Involves dismantling, removal and transportation for recycling or dumping.
- 5. Reuse (D):** Potential environmental benefits from recycling or reuse of materials from the product.

Product EPDs

At Unicon we have product EPDs that cover approx. 80% of our annual production volume. This means that the correct environmental impact from most of our products can be very quickly calculated when you choose a solution from us.

Thus the product EPDs enable us to keep accurate documentation of the environmental impact of the products, and advise our customers on the solutions we offer that are the most suitable for their specific projects and particular needs.

Project-specific EPDs

At Unicon we are also able to draw up project-specific EPDs. This type of EPD is the most accurate, as it is based, amongst other things, on the specific concrete mix-design, consistency variable and the maximum aggregate size used, as well as the precise driving distance to the building site. This also means that the specific environmental impact from our products can always be calculated, whatever solution you choose from us.

It is drawn up on request and invoiced according to the current price list.

Links to [EPDS](#)

- scan QR-code [unicon.dk](https://www.unicon.dk)



Disclaimer - Product EPDs

Unicon's Product EPDs are based on actual delivered concrete over a longer period (usually 12 months). The declared CO₂ footprint on the individual Product EPDs represents a weighted average from all Unicon plants for the grouped corresponding concretes. It can be expected that the CO₂ footprint for delivered concrete is within ± 10% of the respective Project EPD.

Disclaimer - Project EPDs

The CO₂ footprint, phase A1 - A4, on a Project EPD reflects the value that applies to the specific concrete type (recipe), the specific construction site and the producing Unicon plant on the date of publication. The CO₂ footprint for the subsequently delivered concrete for the project may vary to a lesser extent compared to the value on the Project EPD. The reason for this is, among other things:

- Regional differences in sub-materials, which may be relevant when delivering from another plant due to breakdown or closure of the plant.
- Transport distances when delivering from a back-up plant.
- Unforeseen shortage of sub-materials, such as fly ash or lack of aggregate types in the local area due to lack of Environmental Approval for a gravel pit.
- New A1 values for sub-materials

Unicon is not responsible if the customer orders a different type of concrete, or orders other characteristics such as changed Dmax or consistency.

Facts about Unicon's EPDs

Produced in accordance with EN ISO 14025
DS/EN 15804:2012+A2:2019
DS/EN 16757:2022
EPD Norway - General Programme instructions
Dansk Beton's EPD Guidelines

Unicon's authorised users Four employees

Period of validity 5 years from issuance

Third-party verified Yes - EPD Norway

Issued Yes - EPD Norway

Download - use QR code on the left,

Area of validity Denmark

Declared unit 1 m³ ready-mixed concrete

Included phases A1, A2, A3, A4, C1, C2, C3, C4, D



APPROX. 80%
OF ANNUAL PRODUCTION
INCLUDED IN PRODUCT
EPDS



Leader in europe in electric driven concrete delivery

At Unicon we offer emission-free delivery of concrete. This is because we have a clear ambition to create the best solutions in all parts of the value chain - including transport and delivery of concrete.

With our current 10 electric concrete trucks, we can deliver concrete emission-free, while supporting emission-free building sites and contributing to a better working environment with less air and noise pollution.

At Unicon we have been working intensively throughout the years to ensure better solutions for the distribution of concrete, and we are the European concrete producer with the most electric concrete trucks in operation. Our fleet also include a number of HVO-driven pumps and hybrid concrete trucks.

But our work doesn't stop there. At Unicon we have set ourselves the target of reducing CO2 emissions from our fleet of around 200 concrete trucks by 30 per cent in 2025 compared with 2019. We also have a clear strategy to make the fleet of concrete trucks 100 per cent emission-free by 2035.

We have therefore entered into a partnership with Volvo Trucks and Liebherr-Mischtechnik to develop the electric concrete trucks that are necessary for the targets to be achieved - to the benefit of the environment and our customers.



Unicon's production programme

Includes slump concrete, Lava beton® (SCC concrete) and functional concretes, produced and verified in accordance with current concrete standards. In addition, a number of functional concretes are declared according to own declaration. The product programme includes:

CONCRETE WITH FUTURECEM®

- based on CO2-reduced FUTURECEM® cement (CEM II B/M (Q-LL) 52.5 N (LA)).

CONCRETE WITH RAPID CEMENT

- based on RAPID cement (CEM I 52.5 N (LA)).

CONCRETE WITH AALBORG SOLID CEMENT, CONCRETE FOR INFRASTRUCTURE

- based on Aalborg SOLID cement (CEM II/A-V 42.5 N (EA)).

The table below shows which exposure classes the individual concrete types can be subjected to. There are some exposure classes with aggressive and extra aggressive environmental impact where FUTURECEM®-based products must not be used (coloured red) – therefore concrete with RAPID cement or concrete for infrastructure with Aalborg SOLID cement should be ordered. The exposure classes in question are described in more detail, see table below.

ENVIRONMENTAL IMPACT	PASSIVE		MODERATE				AGGRESSIVE					EXTRA AGGRESSIVE						
	X0	XC1	XC2	XC3	XC4	XF1	XA1	XD1	XS1	XS2	XF2	XF3	XA2	XD2	XD3	XS3	XF4	XA3
Concrete with FUTURECEM®	OK	OK	OK	OK	OK	OK	OK	OK	OK	NOT OK	OK	OK	OK	OK	OK	OK	OK	OK
Concrete with RAPID cement	OK	OK	OK	OK	OK	OK	OK	OK	OK	OK	OK	OK	OK	OK	OK	OK	OK	OK
Concrete with Aalborg SOLID cement, concrete for infrastructure	OK	OK	OK	OK	OK	OK	OK	OK	OK	OK	OK	OK	OK	OK	OK	OK	OK	OK

■ OK
 ■ NOT OK
 ■ OK, BUT NOT FOR SWIMMING POOLS
 ■ OK, BUT NOT IF SULPHATE IS THE CAUSE OF XA2/XA3

XS2: Chlorides from seawater. Permanently submerged / parts of marine structures
 XS3: Chlorides from seawater. Tidal, splash and spray zones
 XF4: Freeze/thaw impact. High water saturation, with de-icing salt or seawater
 XA3: Highly aggressive chemical environment. SO₂- >30000 mg/l
 *XF2: Not available at all plants

ESTIMATED (EST.) CO₂ FOOTPRINT

For each concrete type, the CO₂ footprint is calculated as kg CO₂ eq. per m³ of concrete for the life cycle phases A1 to A3 (Product phase), rounded to a multiple of 5. The stated footprint represents an average of concrete recipes in November 2023 across our plants applicable to the stated Dmax and highest consistency in the stated intervals for the concrete type.

When selecting a different Dmax or consistency than stated, the CO₂ footprint must be expected to vary from the stated values. Likewise, the footprint will vary due to regional differences. The values can be used for early assessments and estimate calculations and for comparing different concrete and cement types.

! Please be aware that not all of Unicon's products and services are available at all our 33 plants, but we are always ready to assist you with alternative solutions that meet your needs.

UNI-PLUS SLUMP CONCRETE

DMAX 32 MM, SLUMP 40-120 MM ACC. TO DS 206 & DS/EN 206

Environmental impact	Exposure class	Compressive strength class after 56 days	Cement type	CO ₂ eq. pr. m ³ EST. / EPD	DKK per m3 excl. VAT
Passive	X0, XC1	C12/15 -56 days	FUTURECEM®	75 kg (EST.)	Call for price
		C16/20 -56 days	FUTURECEM®	88 kg (EPD)	Call for price
		C20/25 -56 days	FUTURECEM®	86 kg (EPD)	Call for price
		C25/30 -56 days	FUTURECEM®	102 kg (EPD)	Call for price
Moderate	XC2, XC3, XC4, XF1, XA1	C30/37 -56 days	FUTURECEM®	136 kg (EPD)	Call for price

UNI-PLUS LAVA® SCC CONCRETE

DMAX 16 MM, SLUMP-FLOW 550 MM - ACC. TO DS 206 & DS/EN 206

Environmental impact	Exposure class	Compressive strength class after 56 days	Cement type	CO ₂ eq. pr. m ³ EPD	DKK per m3 excl. VAT
Passive	X0, XC1	C20/25 -56 days	FUTURECEM®	93 kg (EPD)	Call for price
		C25/30 -56 days	FUTURECEM®	102 kg (EPD)	Call for price
Moderate	XC2, XC3, XC4, XF1, XA1	C30/37 -56 days	FUTURECEM®	133 kg (EPD)	Call for price

UNI-VERSAL SLUMP CONCRETE

DMAX 32 MM, SLUMP 40-120 MM - ACC. TO DS 206 & DS/EN 206

Environmental impact	Exposure class	Compressive strength class after 28 days	Cement type	CO ₂ eq. pr. m ³ EST. / EPD	DKK per m3 excl. VAT
Passive	X0, XC1	C12/15	FUTURECEM®	102 kg (EPD)	1,420.00
		C16/20	FUTURECEM®	110 kg (EPD)	1,500.00
		C20/25	FUTURECEM®	122 kg (EPD)	1,600.00
		C25/30	FUTURECEM®	136 kg (EPD)	1,710.00
		C30/37	FUTURECEM®	152 kg (EPD)	1,830.00
		C35/45	FUTURECEM®	169 kg (EPD)	1,970.00
Moderate	XC2, XC3, XC4, XF1, XA1	C30/37	FUTURECEM®	164 kg (EPD)	1,980.00
		C35/45	FUTURECEM®	185 kg (EPD)	2,130.00
Aggressive	XD1, XS1, XS2, XF2, XF3, XA2	C35/45	FUTURECEM®/ RAPID	240 kg (EST.) 256 kg (EPD)	2,270.00
Extra Aggressive	XD2, XD3, XS3, XF4, XA3	C40/50	FUTURECEM®/ RAPID	270 kg (EST.) 299 kg (EPD)	2,510.00

UNI-VERSAL LAVA® SCC CONCRETE

DMAX 16 MM, SLUMP-FLOW 550 MM - ACC. TO DS 206 & DS/EN 206

Environmental impact	Exposure class	Compressive strength class after 28 days	Cement type	CO ₂ eq. pr. m ³ EST. / EPD	DKK per m3 excl. VAT
Passive	X0, XC1	C20/25	FUTURECEM®	141 kg (EPD)	1,820.00
		C25/30	FUTURECEM®	154 kg (EPD)	1,880.00
		C30/37	FUTURECEM®	175 kg (EPD)	2,000.00
		C35/45	FUTURECEM®	180 kg (EPD)	2,080.00
Moderate	XC2, XC3, XC4, XF1, XA1	C30/37	FUTURECEM®	173 kg (EPD)	2,090.00
		C35/45	FUTURECEM®	179 kg (EPD)	2,230.00
Aggressive	XD1, XS1, XS2, XF2, XF3, XA2	C35/45	FUTURECEM®/ RAPID	240 kg (EST.) 260 kg (EPD)	2,350.00
Extra Aggressive	XD2, XD3, XS3, XF4, XA3	C40/50	FUTURECEM®/ RAPID	285 kg (EST.) 303 kg (EPD)	2,600.00

UNI-SOLID CONCRETE FOR INFRASTRUCTURE

DMAX 25 MM, SLUMP 60-120 MM - ACC. TO DS 206 & DS/EN 206

Environmental impact	Exposure class	Compressive strength class after 28 days	Cement type	CO ₂ eq. pr. m ³ EST. / EPD	DKK per m3 excl. VAT
Moderate	XC2, XC3, XC4, XF1, XA1	C30/37	AALBORG SOLID	235 kg (EST.)	2,260.00
Aggressive	XD1, XS1, XS2, XF2, XF3, XA2	C35/45	AALBORG SOLID	260 kg (EPD)	2,770.00
Extra Aggressive	XD2, XD3, XS3, XF4, XA3	C40/50	AALBORG SOLID	282 kg (EPD)	2,950.00

UNI-SOLID LAVA® CONCRETE FOR INFRASTRUCTURE, SCC CONCRETE

DMAX 16 MM, SLUMP-FLOW 550 MM - ACC. TO DS 206 & DS/EN 206

Environmental impact	Exposure class	Compressive strength class after 28 days	Cement type	CO ₂ eq. pr. m ³ EST. / EPD	DKK per m3 excl. VAT
Moderate	XC2, XC3, XC4, XF1, XA1	C30/37	AALBORG SOLID	240 kg (EST.)	2,290.00
Aggressive	XD1, XS1, XS2, XF2, XF3, XA2	C35/45	AALBORG SOLID	250 kg (EPD)	2,800.00
Extra Aggressive	XD2, XD3, XS3, XF4, XA3	C40/50	AALBORG SOLID	271 kg (EPD)	3,010.00

NB. UNI-Solid and UNI-Solid Lava meet the current climate requirements for governance and cooperation in construction projects, where a work description is required for concrete bridges. Here, there is a requirement for max CO₂-eq./m³ of concrete for life cycle phases A1-A3 to be classified as an aggressive or extra aggressive environmental impact. You can find documentation on this by downloading the Product EPDs for Construction Concrete. You can also read more about Unicon's EPDs on pages 10-11. The estimated values given in the column above deviate from this, see explanation on page 14.

UNI-FLOOR G-CONCRETE FOR FLOORS

DMAX 32 MM, SLUMP 80-120 MM - ACC. TO DS 206 & DS/EN 206

Environmental impact	Exposure class	Compressive strength class after 28 days	Type & stone quality	Cement type	CO ₂ eq. pr. m ³ EPD	DKK per m3 excl. VAT
Passive	X0, XC1	C25/30	G1 / A-STEN	RAPID	201 kg (EPD)	2,160.00
		C30/37	G2 / A-STEN	RAPID	219 kg (EPD)	2,330.00
		C30/37	G2 / E-STEN	RAPID	219 kg (EPD)	2,390.00
		C35/45	G3 / E-STEN	RAPID	240 kg (EPD)	2,500.00

UNI-JOINT JOINT CONCRETE

DMAX 8 MM, SLUMP 200-240 MM - ACC. TO DS 206 & DS/EN 206

Environmental impact	Exposure class	Compressive strength class after 28 days	Cement type	CO ₂ eq. pr. m ³ EST. / EPD	DKK per m3 excl. VAT
Passive	X0, XC1	C25/30	FUTURECEM®	215 kg (EST.)	1,960.00
		C30/37	FUTURECEM®	240 kg (EST.)	2,060.00
		C35/45	FUTURECEM®	250 kg (EPD)	2,150.00
Moderate	XC2, XC3, XC4, XF1, XA1	C30/37	FUTURECEM®	250 kg (EST.)	2,280.00
Aggressive	XD1, XS1, XS2, XF2, XF3, XA2	C35/45	FUTURECEM® / RAPID	280 kg (EST.) 350 kg (EST.)	2,470.00
Extra Aggressive	XD2, XD3, XS3, XF4, XA3	C40/50	FUTURECEM® / RAPID	310 kg (EST.) 405 kg (EST.)	2,890.00

UNI-JOINT LAVA® JOINT CONCRETE, SCC CONCRETE

DMAX 8 MM, SLUMP-FLOW 550 MM - ACC. TO DS 206 & DS/EN 206

Environmental impact	Exposure class	Compressive strength class after 28 days	Cement type	CO ₂ eq. pr. m ³ EST.	DKK per m3 excl. VAT
Passive	X0, XC1	C30/37	FUTURECEM®	250 kg (EST.)	2,270.00
		C35/45	FUTURECEM®	260 kg (EST.)	2,370.00
		C45/55	FUTURECEM®	305 kg (EST.)	2,580.00

UNI-WALL SCC CONCRETE FOR WALLS

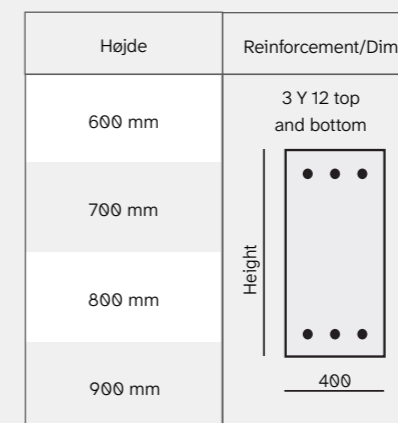
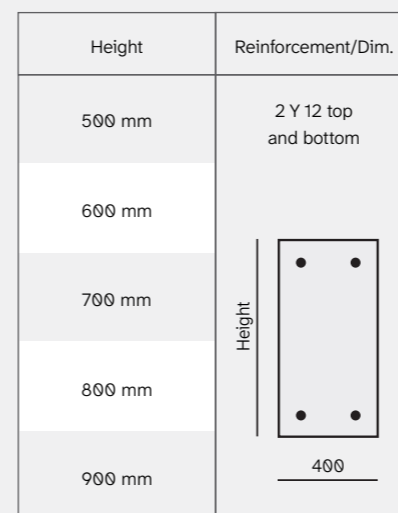
DMAX 16 MM, SLUMP-FLOW 620 MM - ACC. TO DS 206 & DS/EN 206

Environmental impact	Exposure class	Compressive strength class after 28 days	Cement type	CO ₂ eq. pr. m ³ EPD	DKK per m3 excl. VAT
Aggressive	XD1, XS1, XS2, XF2, XF3, XA2	C35/45	RAPID	301 kg (EPD)	2,490.00

UNI-FUNDA® SLUMP CONCRETE STEEL FIBRE SOLUTIONS FOR STRIP FOUNDATIONS

DMAX 32 MM, SLUMP 60-120 MM - ACC. TO DS 206 & DS/EN 206

Environmental impact	Exposure class	Compressive strength class after 28 days	Reinforcement + Height	Cement type	CO ₂ eq. pr. m ³ EST. / EPD	DKK per m3 excl. VAT
Passive	X0, XC1	C20/25	2Y / 500	FUTURECEM®	185 kg (EST.)	2,400.00
		C20/25	2Y / 600	FUTURECEM®	175 kg (EST.)	2,210.00
		C20/25	2Y / 700	FUTURECEM®	165 kg (EST.)	2,110.00
		C20/25	2Y / 800	FUTURECEM®	165 kg (EST.)	2,010.00
		C20/25	2Y / 900	FUTURECEM®	165 kg (EST.)	1,910.00
		C20/25	3Y / 600	FUTURECEM®	200 kg (EST.)	2,690.00
		C20/25	3Y / 700	FUTURECEM®	195 kg (EST.)	2,590.00
		C20/25	3Y / 800	FUTURECEM®	185 kg (EST.)	2,420.00
		C20/25	3Y / 900	FUTURECEM®	139 kg (EPD)	2,360.00



UNI-DRY® SELF-DRYING CONCRETE

DMAX 16 MM, SLUMP 60-120 MM - ACC. TO DS 206 & DS/EN 206

Environmental impact	Exposure class	Compressive strength class after 28 days	Cement type	CO ₂ eq. pr. m ³ EST.	DKK per m3 excl. VAT
Passive	X0, XC1	C35/45	RAPID	355 kg (EST.)	2,590.00

UNI-DRY® EKSTRA SELF-DRYING CONCRETE

DMAX 16 MM, SLUMP 60-120 MM - ACC. TO DS 206 & DS/EN 206

Environmental impact	Exposure class	Compressive strength class after 28 days	Cement type	CO ₂ eq. pr. m ³ EST.	DKK per m3 excl. VAT
Passive	X0, XC1	C40/50	RAPID	410 kg (EST.)	2,910.00

UNI-DRY® LAVA SELF-DRYING CONCRETE, SCC CONCRETE

DMAX 16 MM, SLUMP-FLOW 550 MM - ACC. TO DS 206 & DS/EN 206

Environmental impact	Exposure class	Compressive strength class after 28 days	Cement type	CO ₂ eq. pr. m ³ EST.	DKK per m3 excl. VAT
Passive	X0, XC1	C35/45	RAPID	360 kg (EST.)	2,710.00

UNI-DRY® EKSTRA LAVA SELF-DRYING CONCRETE, SCC CONCRETE

DMAX 16 MM, SLUMP-FLOW 550 MM - ACC. TO DS 206 & DS/EN 206

Environmental impact	Exposure class	Compressive strength class after 28 days	Cement type	CO ₂ eq. pr. m ³ EST.	DKK per m3 excl. VAT
Passive	X0, XC1	C40/50	RAPID	415 kg (EST.)	2,960.00

UNI-READY® LAVA STEEL FIBRE SOLUTION FOR LIGHTLY LOADED FLOORS, SCC CONCRETE

DMAX 16 MM, SLUMP-FLOW 550 MM - ACC. TO DS 206 & DS/EN 206

Environmental impact	Exposure class	Compressive strength class after 28 days	Cement type	CO ₂ eq. pr. m ³ EST.	DKK per m3 excl. VAT
Passive	X0, XC1	C20/25	FUTURECEM®	180 kg (EST.)	2,120.00
		C25/30	FUTURECEM®	200 kg (EST.)	2,150.00
Moderate	XC2, XC3, XC4, XF1, XA1	C30/37	FUTURECEM®	220 kg (EST.)	2,350.00

UNI-PILE® PILING CONCRETE

DMAX 16 MM, SLUMP 180 - 240 MM - ACC. TO DS 206 & DS/EN 206

Environmental impact	Exposure class	Compressive strength class after 28 days	Cement type	CO ₂ eq. pr. m ³ EST.	DKK per m3 excl. VAT
Passive	X0, XC1	C16/20*	FUTURECEM®	100 kg (EST.)	Call for price
		C20/25*	FUTURECEM®	125 kg (EST.)	Call for price
		C25/30*	FUTURECEM®	130 kg (EST.)	Call for price
Moderate	XC2, XC3, XC4, XF1, XA1	C30/37	FUTURECEM®	185 kg (EST.)	Call for price
Aggressive	XD1, XS1, XS2, XF2, XF3, XA2	C35/45	RAPID	300 kg (EST.)	Call for price
Extra Aggressive	XD2, XD3, XS3, XF4, XA3	C40/50	RAPID	360 kg (EST.)	Call for price

*Does not meet the requirements of the normative Annex D in DS/EN 206 and DS 206, regarding concrete for special geotechnical works (v/c-tal ≤ 0,60).

UNI-FILL™ PIPE PASTE

VERY FLUID CONSISTENCY - ACC. TO OWN DECLARATION

Cylinder compression strength	Cement type	CO ₂ eq. pr. m ³ (Estimeret)	DKK per m3 excl. VAT
N/A	FUTURECEM®	270 kg (EST.)	3,110.00

UNI-FILL™ PIPE FILL

DMAX 8 MM, CLASS P MATERIALS, CONSISTENCY 180-250 MM - ACC. TO OWN DECLARATION

Cylinder compression strength	Cement type	CO ₂ eq. pr. m ³ (EST.)	DKK per m3 excl. VAT
N/A	FUTURECEM®	50 kg (EST.)	1,470.00

UNI-RAIN E08 PERVIOUS CONCRETE

DMAX 8 MM, CLASS E MATERIALS - ACC. TO OWN DECLARATION

Cylinder compression strength	Cement type	CO ₂ eq. pr. m ³ (EST.)	DKK per m3 excl. VAT
N/A	FUTURECEM®	160 kg (EST.)	2,222.00

UNI-RAIN P16 PERVIOUS CONCRETE

DMAX 16 MM, CLASS P MATERIALS - ACC. TO OWN DECLARATION

Cylinder compression strength	Cement type	CO ₂ eq. pr. m ³ (EST.)	DKK per m3 excl. VAT
N/A	FUTURECEM®	140 kg (EST.)	1,960.00

UNI-MORTAR CEMENT MORTAR

DMAX 4 MM, CLASS P MATERIALS, SLUMP 40-120 MM - ACC. TO OWN DECLARATION

Cylinder compression strength / mixing ratio cement:sand	Cement type	CO ₂ eq. pr. m ³ (EST.)	DKK per m3 excl. VAT
16 MPa / 1:6	FUTURECEM®	140 kg (EST.)	1,690.00
20 MPa / 1:5	FUTURECEM®	185 kg (EST.)	1,770.00
25 MPa / 1:4	FUTURECEM®	205 kg (EST.)	1,910.00
30 MPa / 1:3	FUTURECEM®	260 kg (EST.)	2,110.00
35 MPa / 1:2,5	FUTURECEM®	265 kg (EST.)	2,280.00
40 MPa / 1:2	FUTURECEM®	335 kg (EST.)	2,860.00

UNI-SCREED SCREED CONCRETE

DMAX 8 MM, SLUMP 40-200 MM - ACC. TO OWN DECLARATION

Cylinder compression strength	Cement type	CO ₂ eq. pr. m ³ (EST.)	DKK per m3 excl. VAT
20 MPa	FUTURECEM®	180 kg (EST.)	1,740.00
25 MPa	FUTURECEM®	190 kg (EST.)	1,820.00
30 MPa	FUTURECEM®	215 kg (EST.)	2,030.00
35 MPa	FUTURECEM®	250 kg (EST.)	2,200.00

UNI-CURB® CURB CONCRETE

DMAX 32 MM, SOIL MOISTURE CONSISTENCY - ACC. TO OWN DECLARATION

Cylinder compression strength	Cement type	CO ₂ eq. pr. m ³ (EST.)	DKK per m3 excl. VAT
12 MPa	FUTURECEM®	90 kg (EST.)	1,660.00
16 MPa	FUTURECEM®	100 kg (EST.)	1,700.00
20 MPa	FUTURECEM®	110 kg (EST.)	1,800.00
25 MPa	FUTURECEM®	120 kg (EST.)	1,870.00
30 MPa	FUTURECEM®	130 kg (EST.)	1,940.00

FIXED CONCRETE SURCHARGESDKK PER M³ EXCL. VAT

CO ₂ surcharge	DKK per m ³	70.00
Energy surcharge	DKK per m ³	184.00
Environment surcharge	DKK per m ³	87.00
Winter surcharge from 16 November to 15 March	DKK per m ³	55.00

EXTRA SERVICESDKK PER M³ EXCL. VAT

Slump 130-160 mm	DKK per m ³	61.00
Slump 170-200 mm	DKK per m ³	93.00
Slump 210-240 mm	DKK per m ³	134.00
Coarse aggregate Dmax 8 mm	DKK per m ³	87.00
Coarse aggregate Dmax 16 mm	DKK per m ³	69.00
Coarse aggregate Class M	DKK per m ³	140.00
Coarse aggregate Class A	DKK per m ³	175.00
Coarse aggregate Class E	DKK per m ³	175.00
Heated concrete from 16 november to 15 march. Winter surcharge is included	DKK per m ³	110.00
UNI-Winter concrete		Call for price
Accelerator (shortens the setting time)	DKK per m ³	91.00
Retarder (prolongs the setting time)	DKK per m ³	71.00
Stricter control class (Testing frequency min. 1 per 50 m ³)	DKK per m ³	25.00
Concrete with RAPID Cement	DKK per m ³	20.00
Concrete with added steel or plastic fibre		Call for price
Temperature simulation acc. to specification	DKK per pce.	2,850.00
Preparation of project-specific environmental product declarations (EPDs) per concrete type	DKK per pce.	3,500.00
Technical assistance/site inspection	DKK per hour	1,500.00
Engineer service	DKK per pce.	1,300.00
Mobile laboratory (incl. 1 man) - min. 2 hours including transport	DKK per hour	1,245.00

EXTRA SERVICESDKK PER M³ EXCL. VAT

Emission-free delivery by electric concrete truck		Call for price
Bio diesel or GTL (Gas to liquid)		Call for price
Unloading with conveyor belt (minimum per order DKK 545.00)	DKK per m ³	109.00
Loads under 5 m ³ (charged per m ³ up to 5 m ³)	DKK per m ³	395.00
Option of 4-axled vehicle	DKK per m ³	95.00
Handling of residual/returned concrete, including recycling site fee - charged per whole m ³	DKK per m ³	645.00
Planned extra time on site (invoiced per started 15 min.)	DKK per quarter	190.00
Unplanned extra time on site (invoiced per started 15 min.)	DKK per quarter	340.00
For loads up to 7 m ³ , there are 30 min on site time included. After this, included time on site is increased by 3 min. per m ³ over 7 m ³		
Time on site is calculated from arrival at the building site until unloading has been completed.		
Late cancellation fee. Actual costs, however, minimum	DKK per m ³	95.00
Pick-up at the plant	DKK	250.00
Opening of plant by agreement (excluding hourly rate per employee , min. 4 hours)		6,000.00
Rate per employee inside normal working hours 07.00-15.00 on weekdays	DKK per hour	595.00
Rate per employee; outside normal working hours 15.00-20.00 on weekdays	DKK per hour	395.00
Rate per employee; outside normal working hours 20.00-07.00 on weekdays	DKK per hour	795.00
Rate per employee; all hours on saturdays, sundays and public holidays	DKK per hour	795.00
Normal opening hours for delivery: monday-thursday 07.00-15.00, friday 07.00- 14.00		

!

Please be aware that not all of Unicon's products and services are available at all our 33 plants, but we are always ready to assist you with alternative solutions that meet your needs.

All prices are exclusive of VAT. This price list is available in both Danish and English. In the event of any discrepancies between the language versions, the Danish version shall prevail.

Unicon reserves the right to correct any typographical or translation errors.



Pumps

Prices	22
Extra services	23
Overview of pumps	24
Pump policy	26



PUMPING PRICES

DKK PER M3 EXCL. VAT

PLACING BOOM RANGE	24m	28m Pumi*	31m Hall	32m	36m	42/46m	50m	61m
Price per m ³	108.00	115.00	150.00	130.00	140.00	180.00	190.00	250.00
Startup price	4,800.00	5,200.00	5,500.00	5,250.00	5,350.00	5,650.00	5,900.00	9,000.00
Standby hourly rate	1,620.00	1,725.00	2,250.00	1,950.00	2,100.00	2,700.00	2,850.00	3,750.00

Billed as regulated volume corresponding to minimum pumping of 15 m3/per hour.

The above prices and times apply within normal working hours, and include the services of 1 operator. The pump can be equipped with an end hose, which is included in the above prices. An additional price for pump startup priming grout will be added to the above prices.

*Startup for Pumi includes 45 m3 pumping. Pumping with Pumi is only possible in the East Jutland area.

FIXED PUMP SURCHARGE

DKK PER M3 EXCL. VAT

Environment surcharge (min. DKK 500)	DKK per m ³	32.00
--------------------------------------	------------------------	-------

ORDER CANCELLATION FEE

DKK PER M3 EXCL. VAT

	24m	28m Pumi	31m Hall	32m	36m	42/46m	50m	61m
Order cancelled <48 hours* (Mon-Fri)	4,800.00	5,200.00	5,500.00	5,250.00	5,350.00	5,650.00	5,900.00	9,000.00
Order cancelled 48-72 hours* (Mon-Fri)	2,900.00	3,200.00	3,300.00	3,200.00	3,300.00	3,500.00	3,600.00	5,400.00

*Before the pump is ordered.

If the time of delivery is changed, 50% of the cancellation fee is charged.



EXTRA SERVICES

DKK PER M3 EXCL. VAT

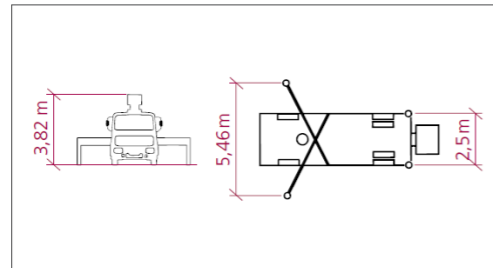
Extended pipe length up to 20 m pipe/hose (incl. rigging/unrigging/washing of pipes)	DKK per job	2,600.00
Extended pipe length over 20 m tube/hose (incl. rigging/unrigging/washing of pipes plus extra man)	DKK per job	8,000.00
Pipe lengths greater than 50 m, volumes greater than 300 m ³ and with use of 4" hoses		Call for price
Extra man (with 4" hoses, basement/floor castings, volume over 300 m ³ , pipe lengths over 50 m, safety requirements and special jobs) min. 4 hours	DKK per hour	595.00
Rate per person outside normal working hours 15.00-20.00 on weekdays	DKK per hour	395.00
Rate per person outside normal working hours 20.00-07.00 on weekdays	DKK per hour	795.00
Rate per person all hours on Saturdays, Sundays and public holidays	DKK per hour	795.00
Extender arm 21 m outlay (excl. transport, setup and extra man)	DKK per m ³	60.00
Stationary pump		Call for price
Sliding dampers and other special equipment		Call for price
Technical assistance/site inspection	DKK per hour	1,500.00
Washing of pump on building site		No charge
Washing of pump on building site in wash bag - per job excl. waste disposal		799.00
External washing of pump outside building site		3,500.00
Boom swing lock	DKK per job	1,800.00

All prices are exclusive of VAT. This price list is available in both Danish and English. In the event of any discrepancies between the language versions, the Danish version shall prevail. Unicon reserves the right to correct any typographical or translation errors.



24 METRE

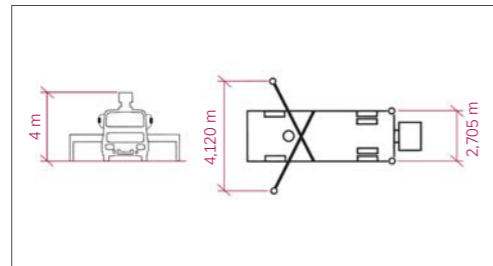
The 24 metre pump is a small, compact pump with a pump capacity of up to 110 m³ an hour. This makes it particularly effective for jobs with limited space and access, where a relatively large volume is needed.



Range (horizontal)	19 m
Range (vertical)	24 m
Theoretical capacity	110 m ³ /h
Lowest unfolding height	4,9 m
Max. supporting leg pressure	113 kN

28 METRE PUMI

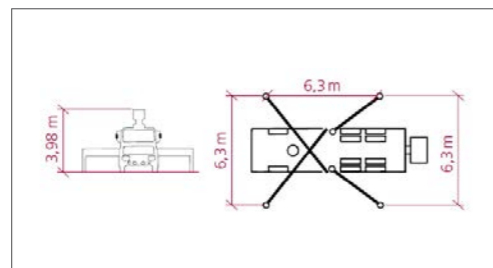
A Pumi is a rotary truck with a permanently mounted pump, which is ideal for small jobs (1-2 loads), and jobs with limited space and access. It can be set up quickly, and intermediate transport can be avoided.



Range (horizontal)	23,7 m
Range (vertical)	27,1 m
Theoretical capacity	61 m ³ /h
Lowest unfolding height	m
Max. supporting leg pressure	225 kN

31 METRE HALL PUMP

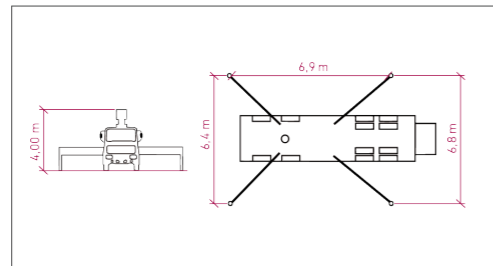
The hall pump has great unfolding flexibility and an unfolding height of only 5.75 metres. This makes it especially suitable for jobs where the unfolding height is very limited, in halls for example.



Range (horizontal)	27 m
Range (vertical)	31 m
Theoretical capacity	160 m ³ /h
Lowest unfolding height	5,44 m
Max. supporting leg pressure	185 kN

32 METRE

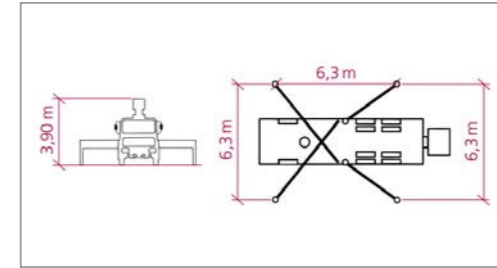
The 32 metre pump has a vertical range of 31.7 metres and a horizontal range of 27.7 metres. This makes it ideal for medium-sized building projects, where both height and range are decisive. The pump has a maximum capacity of 138 m³/h, which ensures effective delivery of concrete. With a compact design and great flexibility in the spreader arm, the 32 metre pump is perfect for both indoor and outdoor jobs.



Range (horizontal)	27,7 m
Range (vertical)	31,7 m
Theoretical capacity	138 m ³ /h
Lowest unfolding height	5,94 m
Max. supporting leg pressure	200 kN

36 METRE

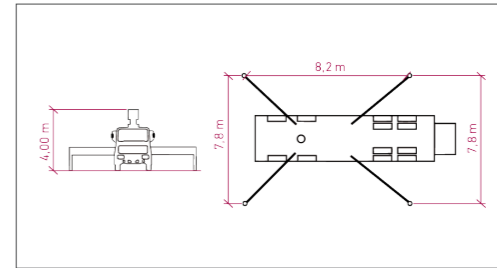
The 36 metre pump has a supporting leg width of only 6.3 metres. This makes it ideal for large jobs, where there is limited space for set-up. If pumping is only needed to one side, the width can be reduced further.



Range (horizontal)	32 m
Range (vertical)	36 m
Theoretical capacity	160 m ³ /h
Lowest unfolding height	8,7 m
Max. supporting leg pressure	180 kN

42 METRE

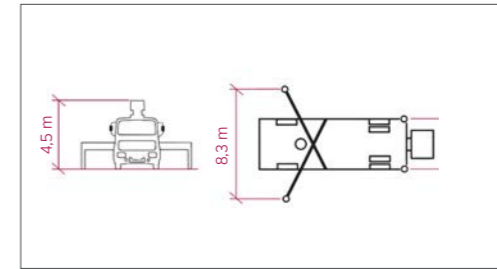
The 42 metre pump has a horizontal range of 42 metres and a vertical range of 42 metres. This makes it ideal for jobs where the distance from the access point to the place of use is large, or where large volumes of concrete are needed promptly.



Range (horizontal)	37,2 m
Range (vertical)	41,2 m
Theoretical capacity	166 m ³ /h
Lowest unfolding height	8,6 m
Max. supporting leg pressure	270 kN

46 METRE

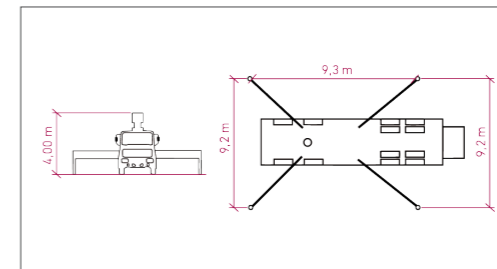
The 46 metre pump has a vertical range of 45.6 metres and a horizontal range of 41.8 metres. With a maximum capacity of 161 m³/h, this pump is ideal for large-scale building projects, where a wide range and a large volume of concrete are needed. The spreader arm has a flexible rotation capacity with a swing area of 365°, which makes it possible to work effectively on large building sites with complex needs.



Range (horizontal)	41,8 m
Range (vertical)	45,6 m
Theoretical capacity	162 m ³ /h
Lowest unfolding height	13,4 m
Max. supporting leg pressure	260 kN

50 METRE

The 50 metre pump has a vertical range of 49.1 metres and a horizontal range of 44.4 metres. With a maximum capacity of 163 m³/h, this pump is ideal for large-scale building projects, where a wide range and a large volume of concrete are needed. The spreader arm has a flexible rotation capacity with a swing area of 365°, which makes it possible to work effectively on large building sites with complex needs.

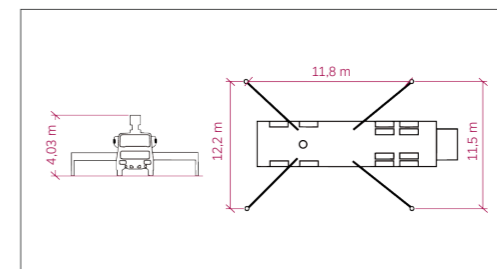


Range (horizontal)	44,4 m
Range (vertical)	44,9 m
Theoretical capacity	163 m ³ /h
Lowest unfolding height	13,7 m
Max. supporting leg pressure	260 kN

61 METRE

The 61 metre pump is one of Denmark's biggest, and is therefore ideal for jobs where the distance from access point to place of use is extremely large, or where large volumes of concrete are needed promptly.

NB. Customers provide their own driving boards for all four supporting legs.



Range (horizontal)	55,1 m
Range (vertical)	60,4 m
Theoretical capacity	160 m ³ /h
Lowest unfolding height	15 m
Max. supporting leg pressure	370 kN



CONCRETE WITHOUT FIBRES

Type and hose diameter/length	Agg. size (mm)	Directly from the mast	2"	2,5"	3"	4"	0-20m	21-40m	41-60m	60+ m
Start		0,5 m ³	-	-	-	-	0,5 m ³	0,5 m ³	0,75 m ³	1 m ³
Min. requirements for slump		120	-	-	-	-	140	160	180	200
Slump concrete C16/20	8	✓*	-	-	-	-	-	-	-	-
min slump 140	16	✓	-	-	-	-	-	-	-	-
	32	✓*	-	-	-	-	-	-	-	-
Slump concrete C20/25	8	✓	✓	✓	✓	✓	✓	-	-	-
	16	✓	-	-	✓	✓	✓	-	-	-
	32	✓	-	-	-	✓	-	-	-	-
Slump concrete C25/30	8	✓	✓	✓	✓	✓	✓	-	-	-
	16	✓	-	-	✓	✓	✓	-	-	-
	32	✓	-	-	-	✓	-	-	-	-
Slump concrete C30/37	8	✓	✓	✓	✓	✓	✓	✓	✓	-
	16	✓	-	-	✓	✓	✓	✓	✓	-
	32	✓	-	-	-	✓	-	-	-	-
Slump concrete C35/45	8	✓	✓	✓	✓	✓	✓	✓	✓	Contact Unicon
	16	✓	-	-	✓	✓	✓	✓	✓	Contact Unicon
	32	✓	-	-	-	✓	-	-	-	-
Slump concrete C40/50 +	8	✓	✓	✓	✓	✓	✓	✓	✓	Contact Unicon
	16	✓	-	-	✓	✓	✓	✓	✓	Contact Unicon
	32	✓	-	-	-	✓	-	-	-	-
Lava (SCC) concrete C20/25*	8	✓	-	-	-	-	-	-	-	-
	16	✓	-	-	-	-	-	-	-	-
	32	✓	-	-	-	✓	-	-	-	-
Lava (SCC) concrete C25/30	8	✓	✓	✓	✓	✓	✓	-	-	-
	16	✓	-	-	✓	✓	✓	-	-	-
	32	✓	-	-	-	✓	-	-	-	-
Lava (SCC) concrete C30/37	8	✓	✓	✓	✓	✓	✓	✓	✓	-
	16	✓	-	-	✓	✓	✓	✓	✓	-
	32	✓	-	-	-	✓	-	-	-	-
Lava (SCC) concrete C35/45	8	✓	✓	✓	✓	✓	✓	✓	✓	Contact Unicon
	16	✓	-	-	✓	✓	✓	✓	✓	Contact Unicon
	32	✓	-	-	-	✓	-	-	-	-
Lava (SCC) concrete C40+	8	✓	✓	✓	✓	✓	✓	✓	✓	Contact Unicon
	16	✓	-	-	✓	✓	✓	✓	✓	Contact Unicon
	32	✓	-	-	-	✓	-	-	-	-
UNI-Floor G1, G2 og G3	16	✓	-	-	✓	✓	✓	✓	-	-
	32	✓	-	-	-	✓	-	-	-	-
UNI-Joint - Joint concrete	8	✓	✓	✓	✓	✓	✓	✓	✓	Contact Unicon

CONCRETE WITH STEEL OR MACRO FIBRES

Type and hose diameter/length	Agg. size (mm)	Directly from the mast	2"	2,5"	3"	4"	0-20m	21-40m	41-60m	60+ m
Start		0,5 m ³	-	-	-	-	0,5 m ³	0,5 m ³	0,75 m ³	1 m ³
Min. requirements for slump		140					140	160	180	Contact Unicon
Slump concrete C20/25	8	✓	-	-	-	-	-	-	-	-
	16	✓	-	-	-	-	-	-	-	-
	32	✓	-	-	-	-	-	-	-	-
Slump concrete C25/30	8	✓	-	-	✓	✓	✓	-	-	-
	16	✓	-	-	✓	✓	✓	-	-	-
	32	✓	-	-	-	✓	-	-	-	-
Slump concrete C30/37	8	✓	-	-	✓	✓	✓	✓	-	-
	16	✓	-	-	✓	✓	✓	✓	-	-
	32	✓	-	-	-	✓	-	-	-	-
Slump concrete C35/45	8	✓	-	-	✓	✓	✓	✓	✓	Contact Unicon
	16	✓	-	-	✓	✓	✓	✓	✓	Contact Unicon
	32	✓	-	-	-	✓	-	-	-	-
Slump concrete C40/50 +	8	✓	-	-	✓	✓	✓	✓	✓	Contact Unicon
	16	✓	-	-	✓	✓	✓	✓	✓	Contact Unicon
	32	✓	-	-	-	✓	-	-	-	-
Lava (SCC) concrete C20/25*	8	✓	-	-	-	-	-	-	-	-
	16	✓	-	-	-	-	-	-	-	-
	32	✓	-	-	-	✓	-	-	-	-
Lava (SCC) concrete C25/30	8	✓	-	-	✓	✓	✓	-	-	-
	16	✓	-	-	✓	✓	✓	-	-	-
	32	✓	-	-	-	✓	-	-	-	-
Lava (SCC) concrete C30/37	8	✓	-	-	✓	✓	✓	✓	-	-
	16	✓	-	-	✓	✓	✓	✓	-	-
	32	✓	-	-	-	✓	-	-	-	-
Lava (SCC) concrete C35/45	8	✓	-	-	✓	✓	✓	✓	✓	Contact Unicon
	16	✓	-	-	✓	✓	✓	✓	✓	Contact Unicon
	32	✓	-	-	-	✓	-	-	-	-
Lava (SCC) concrete C40+	8	✓	-	-	✓	✓	✓	✓	✓	Contact Unicon
	16	✓	-	-	✓	✓	✓	✓	✓	Contact Unicon
	32	✓	-	-	-	✓	-	-	-	-
UNI-Floor G1, G2 og G3	16	✓	-	-	✓	✓	✓	✓	-	-
	32	✓	-	-	-	✓	-	-	-	-
UNI-Joint - Joint concrete	8	✓	-	-	✓	✓	✓	✓	✓	Contact Unicon

NB. Macroplasticfibre max 3,5 kg
 3D Steel fibers 3D 45/50 max 25 kg og max 16 mm agg.
 4D Steel fibers 4D 65/60 max 15 kg og max 16 mm agg.

- UNI-Funda and Lecabeton CAN NOT be pumped
- Unicon prepares hoses for casting and unrigging. Hoses are handled by the customer during casting.
- If consistency is to be checked, this should be done on arrival at the building site and directly from the mixer truck.
- If casting exceeds the above limits or other fibre types/aggregates, please contact the pump department.
- For work environment reasons, 4" hoses should be avoided if possible.

* Lava concrete P20 must be based on FUTURECEM cement.

1 VALIDITY

- 1.1 These terms of sale and delivery are applicable for all purchases made from Unicon A/S via telephone, email, the Unicon A/S website or any other channel.
- 1.2 Unicon A/S means the company Unicon A/S, with company registration number 16 06 49 39, Ulvehavevej 61, 7100 Vejle, Denmark.
- 1.3 The buyer's general purchasing conditions or other standard terms are not applicable in respect of the sale and delivery of services from Unicon A/S, regardless of the buyer's references thereto in orders, enquiries or elsewhere.

2 OFFERS AND ORDERS

- 2.1 Any offer from Unicon A/S, including on www.unicon.dk, is merely a request to the buyer to forward an offer to Unicon A/S in the form of an order.
- 2.2 When the buyer submits an order to Unicon A/S via telephone, email, the Unicon A/S website or any other channel, this order will be not be binding upon Unicon A/S until the buyer receives an order confirmation.

3 PRICES/VOLUMES

- 3.1 The prices are stated per m³ exclusive of VAT and the environmental/regulatory fees that are applicable on the day of delivery. The prices include free delivery to a delivery address within a driving distance of 50 km from Unicon A/S's factories, including on islands in Denmark connected to the mainland by bridge. If delivery beyond 50 km from Unicon A/S's factories is required, this is only possible with prior consent from Unicon A/S and payment in accordance with the current price list.
- 3.2 The prices are based on delivery of full loads within the opening hours and delivery times specified in the pricelist. A surcharge will be calculated for delivery outside the specified hours as well as for delivery of volumes smaller than the quantities specified in the pricelist.
- 3.3 The quantity delivered by Unicon A/S may vary by +/- 15% compared to the volume specified in the order confirmation or as subsequently agreed with the buyer. The concrete volume stated in the delivery note represents the final volume of the concrete with the targeted air content.
- 3.4 Time on site exceeding the maximum time stated in the price list will be charged according to the current price list.
- 3.5 In the event that the buyer requires the Unicon or Unicon's personnel to attend safety training courses, the Seller shall be entitled to invoice the buyer for the time spent attending such courses, as well as any direct expenses incurred in connection therewith.
- 3.6 Unicon A/S will invoice all deliveries in accordance with the pricelist valid on the day of delivery.

4 PAYMENT

- 4.1 Up to date of invoice plus 8 days net (private customers).
- 4.2 Up to current month + 15 days net (for others).
- 4.3 In the event of late payment, interest will be added, and a reminder fee of DKK 100 will be charged if a written reminder is sent in accordance with the Danish Interest Act.
- 4.4 Payment for the service shall be made via bank transfer in accordance with the invoice issued by Unicon A/S. The invoice is issued no earlier than at the time of delivery.

5 DELIVERY

- 5.1 Delivery is only offered to addresses in Denmark. Delivery is made from Unicon A/S's own concrete trucks, and the deliveries are delivered and unloaded at the delivery address or the GPS coordinates shown on the order confirmation, or as close to this as driving conditions permit. If the buyer requests delivery across surfaces with insufficient loadbearing capacity, any consequential damage shall be at the expense of the buyer.
- 5.2 Delivery surcharges are specified in the current price list, which can be found at www.unicon.dk.
- 5.3 It is the buyer's responsibility to obtain the necessary permits for setting up in trafficked areas and notify at the site where delivery takes place.
- 5.4 For safety reasons, the unloading site should be level, horizontal and hard-wearing. The buyer is responsible for compliance with this requirement. If the buyer requests delivery across surfaces with insufficient loadbearing capacity, any consequential damage shall be at the expense of the buyer.
- 5.5 During the performance of deliveries at the Buyer's premises, Unicon's drivers shall be granted access to adequate sanitary facilities and/or site welfare units, ensuring that the work can be carried out under safe and hygienic conditions in accordance with applicable occupational health and safety regulations. The Buyer undertakes to make such facilities available without undue delay and at no cost to Unicon.
- 5.6 The time of delivery is when the delivery has arrived at the site or is collected by the buyer from Unicon A/S's factory. The buyer must specify the required time of delivery when ordering. If the requested time of delivery is accepted, Unicon A/S will strive to deliver 15 minutes before to 30 minutes after the requested delivery time. If Unicon A/S does not deliver within the agreed timeframe, the buyer is entitled to demand delivery and specify a final reasonable deadline for delivery by notifying Unicon A/S in writing.
- 5.7 The right of withdrawal under section 18 of the Danish Consumer Contracts Act does not apply, cf section 18 (2).
- 5.8 If delivery has not been made by the final reasonable deadline specified by the buyer, the buyer is entitled to cancel the delivery by notifying Unicon A/S in writing.
- 5.9 If the buyer is unable to take delivery from 15 minutes before to 30 minutes after the requested delivery time, the buyer revokes the right to claim against Unicon A/S for failed, delayed or deficient delivery that is caused by the buyer's inability to receive the delivery at the agreed delivery time.
- 5.10 The buyer has the right to cancel an order provided, however, that Unicon A/S has not already mixed the concrete.

6 CHANGES

- 6.1 If the buyer wishes to change the time of delivery for a delivery/partial delivery, this must be notified before 10.00 a.m. the day before the agreed time of delivery stated on the order confirmation. If notification is given by this time, Unicon A/S will make every effort to deliver in accordance with the requested delivery time.
- 6.2 For concrete pumping services, this notification must be given no later than 72 hours before the agreed time of delivery stated on the order confirmation.
- 6.3 If the buyer wishes to make changes to ordered agreements, this must be done in writing. Significant changes in the ordered volume will be regarded as a cancellation of the order.

7 INSPECTION ON RECEIPT

- 7.1 The buyer is given a provisional delivery note with each delivery. During unloading, the buyer or the buyer's representative must carry out a visual inspection of the concrete and acknowledge on the driver's TMS (Transport Management System) that the delivery has been received and that the specifications on the delivery note and the delivered goods are consistent with the required specifications, as shown on the order confirmation or as later agreed between Unicon A/S and the buyer.
- 7.2 A confirmatory delivery note is prepared during delivery, which contains details of the time of arrival and the time of unloading. At the buyer's request, the confirmatory delivery note can be sent digitally after delivery is made.
- 7.3 The buyer's visual inspection and quality check must be carried out before the concrete is loaded into the concrete pump.
- 7.4 In the event that the buyer is unable to receive and acknowledge the delivery, Unicon A/S's driver will make a note of this in the TMS, after which delivery will legally have been made. If the buyer is already aware, or should be aware, at the time of delivery that the delivery has been delayed or is deficient, the buyer is obliged to make a complaint to Unicon A/S immediately in accordance with Clause 13.6. Otherwise, the buyer will have lost their right to subsequently invoke such claim.
- 7.6 If the buyer has not been able to receive the delivery within 90 minutes of the stated time of delivery, subsequent delivery will be made at the buyer's own risk. In that case the buyer loses their right to subsequently invoke a claim.

8 INSPECTION OF CONCRETE

- 8.1 Unicon A/S' fabrikker er certificeret af Dancert, der medvirker til at sikre, at leverancerne er i overensstemmelse med gældende normer og forskrifter, herunder DS206 og DS/EN206. Certificeringen gælder dog ikke for leverancer under 1m³, og betontyper som ikke er omfattet af normen. Unicon A/S' kvalitetsstyringssystem i henhold til DS/EN ISO 9001 sikrer, at betonkvalitet og kvalitetskontrol dokumenteres i henhold til gældende normer og forskrifter.
- 8.2 Individual results as well as the statistical processing of the results from the internal quality control are available to the buyer by written agreement.
- 8.3 If no other written agreement has been made, Unicon A/S' internal quality control shall be the basis for documentation.

9 PRODUCT USABILITY AND POST-TREATMENT

- 9.1 Unicon A/S is without liability, if the buyer has ordered a concrete supply which is not suitable for the purpose or the casting conditions.
- 9.2 Unicon A/S is not liable for quality reduction, caused by premature desiccation, inadequate compression, covering or finishing. Unicon A/S is not liable for colour differences or other circumstances caused by change of specifications, including changes of the specifications made by Unicon A/S' material suppliers, in standing orders.
- 9.3 Unicon A/S cannot be held liable for any loss of consistency or separation or separation during the flow of the concrete in the concrete pump that can be attributed to the type of the supplied product.
- 9.4 Any addition to the concrete, initiated by the buyer, is at the buyer's risk. Any addition to the concrete initiated by Unicon A/S must only be made with the buyer's prior consent.

10 LIABILITY FOR DEFECTS

- 10.1 In the event of defects that could not be identified upon delivery despite the buyer's inspection upon unloading under Clause 7, the delivery is delivered with 5 years supplier liability for deficiencies in accordance with the regulations in AB 18, Section 12, Subsection 5.
- 10.2 Where the buyer is the developer and performs the work himself, the 5-year period is calculated from the time of delivery.
- 10.3 The 5-year or 6-year claims period cannot be extended on the grounds of rectification or similar measures in connection with the delivery during the prolonged claims period.
- 10.4 Unicon A/S will choose to rectify a deficient delivery by taking remedial action, redelivering or reducing the price proportionately.
- 10.5 Unicon reserves the right to replace materials and components with equivalent alternatives in the event of shortage, unavailability, or supply disruption, provided that such substitution does not materially impair the quality or performance of the delivered goods.
- 10.6 Other than the foregoing, the buyer cannot make any additional claim for damages, unless Unicon A/S fails to rectify the defect within a reasonable time in accordance with Clause 10.4. In such case, and only if the defect is significant, the buyer is entitled to cancel the purchase and demand compensation, which, however, is limited to the loss referred to in Clause 12.
- 10.7 For consumers, the mandatory provisions of the Sales Act apply in respect of the right to claims and defects.

11 PRODUCT LIABILITY

- 11.1 Product liability is governed by applicable Danish legislation, with the limitations of liability that are specified in these terms of sale and delivery.
- 11.2 Unicon A/S can only be held liable for personal injury caused by a delivery if the buyer can prove that the injury is a consequence of an act of omission or negligence from Unicon A/S, or other parties for whom Unicon A/S is responsible.
- 11.3 Unicon A/S is not liable for damage to fixed or moveable property that is caused after delivery is made. Nor is Unicon A/S liable for damage to the buyer's property for which Unicon's delivery is used.
- 11.4 Unicon A/S's product liability is subject to the limitations referred to in Clause 12 of these terms, to the extent which is permitted under applicable legislation.
- 11.5 In case of a trial, the buyer shall let himself be sued at the same court of law that is hearing the claim against Unicon A/S.

12 LIMITATION OF LIABILITY

- 12.1 In case of liability for defective delivery (including product liability) and delay, Unicon A/S' liability does not include operating loss, loss of time, loss of profit or other indirect loss. In case of liability for delay or defective delivery, Unicon A/S' liability is maximised to the price of the delayed/defective delivery.
- 12.2 In the event of downtime, machine damage or other breakdown of concrete pumps, Unicon A/S assumes no liability and no compensation shall be paid.

13 CLAIMS

- 13.1 Complaints must be made in writing and immediately (no later than 10 days after delivery) after the buyer is made aware or should have been aware of the claim. The written complaint must state the nature and extent of the claim. If such notice is not given, any future claim will be forfeited.
- 13.2 In order for a claim to be deemed as received by Unicon A/S, it must contain documentation of what is being claimed, the delivery note describing the alleged defective delivery, and a specification of the requested rectification, as referred to in Clause 10.4. The buyer must prove that the defect was present at the time of delivery.
- 13.3 If there are no defects for which Unicon A/S is liable, Unicon A/S is entitled to compensation for the expenses Unicon A/S has incurred as a result of the claim.
- 13.4 No repair works may be commenced without prior agreement with Unicon A/S.
- 13.5 For consumers, complaints must be made within reasonable time. Claims made within two months of delivery will always be regarded as timely. In addition, the mandatory provisions of the Sales Act apply in respect of defects and claims.
- 13.6 Claims may be made using Unicon's claims form, which is available on Unicon's website and on this link.

14 COMPLAINT OPTIONS

- 14.1 Should consumers wish to complain about the service provided, they are advised to initially contact Unicon A/S at kundecenter@unicon.dk.
- 14.2 The complaint must be in writing, contain a reference number (either order number or invoice number), and describe the background for the complaint and the desired outcome.
- 14.3 If it is not possible for the parties to find a solution, the buyer may file a complaint with the Mediation Team for Consumer Complaints. If the matter remains unresolved, the buyer may escalate to the Consumer Complaints Board.
- 14.4 You can find further information about the Mediation Team for Consumer Complaints and the Consumer Complaints Board here: <https://naevneneshus.dk/start-din-klage/maeglingsteamet-for-forbrugerklager-og-forbrugerkla-genaevnet>.
- 14.5 The EU Commission's online complaints portal can also be used for submitting a complaint. This is particularly relevant if the buyer is a consumer residing in another EU country. Complaints can be submitted here: <http://ec.europa.eu/odr>. If you submit a complaint, please refer to Unicon A/S's email address: info@unicon.dk.

15 RELEASE FROM LIABILITY (FORCE MAJEURE)

- 15.1 Unicon A/S is not liable for delays that are a result of i) variations to the works ordered by a client (in Danish: Bygherren), ii) the circumstances of the client or delay in the part of another contractor, iii) war, acts of God, fire, strike, lockout, picketing, vandalism or similar events that are without fault of Unicon A/S and beyond Unicon A/S's control, iv) precipitation, low temperature, strong wind or other weather conditions that prevent or delay the work when such weather conditions occur to a significantly greater extent than is usual for the relevant season and region, or v) public enforcement notices or prohibitions which are not due to circumstances of Unicon A/S.

16 GUIDANCE

- 16.1 Unicon A/S will to the best of its ability guide the buyer on the choice of products, their functions and suitability for specific purposes. It is explicitly agreed that such technical guidance or assistance, for which no separate charge is made, does not impose any liability or obligation on Unicon A/S in respect of such guidance and assistance, or for the results obtained.

- 16.2 Furthermore, Unicon A/S only accepts liability if Unicon A/S has provided specific and separate written advice to the buyer in the form of analyses of cement, fly ash and concrete in accordance with DANAK accreditation, and analyses of sand, stone, gravel and concrete to a buyer who cannot be assumed to possess the necessary expertise in the area to independently assess the question of the product's suitability.
- 16.3 Unicon A/S's liability is limited to a maximum of DKK 100,000 in the event of erroneous advice, and does not cover operational loss, loss of time, loss of profit, or other indirect loss. Unicon A/S is not liable for statements that are based on an estimation or assessment.

17 APPLICABLE LAW AND JURISDICTION

- 17.1 While these terms of sale and delivery are governed by Danish law, the rules of Danish international private law and the United Nations Convention on Contracts for the International Sale of Goods (CISG) shall not be applicable.
- 17.2 Any dispute that may arise between the parties, including disputes concerning the adoption or validity of these terms of sale and delivery, shall be finally settled by arbitration administered by the Danish Institute of Arbitration in accordance with the Rules of Arbitration adopted by the Board of the Danish Institute of Arbitration.
- 17.3 Unicon A/S may, however, choose to have the dispute settled by the ordinary Danish courts, and Unicon A/S may choose to have disputes relating to building and construction considered by the Danish Building and Construction Arbitration Board in accordance with the Board's rules therefor.

SPECIAL CLAUSES FOR CONCRETE PUMPING SERVICES**18 PRICES**

- 18.1 The prices for concrete pumping are the prices stated in the price list exclusive of VAT, and the environmental/regulatory fees that are applicable on the day of delivery.
- 18.2 The prices include the services of one operator during normal working hours and within a driving distance of 50 km from Unicon A/S's factories, including islands in Denmark connected to the mainland by bridge.
- 18.3 Surcharges are made for overtime, additional manpower, extended driving distance, and reserve pumps.
- 18.4 Unicon A/S will invoice all deliveries in accordance with the pricelist valid on the day of delivery or a valid agreement between the buyer and Unicon A/S.

19 SETTING UP OF EQUIPMENT/DELIVERY

- 19.1 Concrete pumping services are provided on the delivery address or the GPS coordinates shown on the order confirmation or as close to this as the conditions allow.
- 19.2 The buyer is responsible for indicating the location for setting up the concrete pump equipment.
- 19.3 No structural modifications, including any installation of equipment, may be made to Unicon's or Unicon's suppliers' vehicles unless Unicon has given prior written consent.
- 19.4 The buyer is responsible for ensuring that access conditions, the setup location, etc. have sufficient bearing capacity for setting up of concrete pumping equipment. Any damage costs are to be covered by the buyer.
- 19.5 If the buyer is unable to take delivery from 15 minutes before to 30 minutes after the requested delivery time, the buyer revokes the right to claim against Unicon A/S for failed, delayed or deficient delivery that is caused by the buyer's inability to receive the delivery at the agreed delivery time.

20 CERTIFICATION

- 20.1 Concrete pumping is a separate service provided that Unicon A/S delivers and is not included in Unicon A/S's certification system.

21 ACKNOWLEDGEMENT ON CONSIGNMENT NOTE

- 21.1 For each concrete pumping service, Unicon A/S's pumping personnel complete a delivery note with all the required information. The buyer or its representative must acknowledge receipt of the delivery note that the pumping service has been received and the specifications on the delivery note are consistent with the buyer's required specifications, as described in the order confirmation.

22 USABILITY

- 22.1 Unicon A/S is not liable if a concrete pumping service is requested that is not suitable to the purpose.
- 22.2 The buyer must ensure that the concrete and its composition are suitable for concrete pumping. Otherwise, the buyer is responsible for any losses incurred in connection with the pumping service.
- 22.3 Unicon A/S cannot be held liable for any loss of consistency or separation during the pumping of concrete, that can be attributed to the type of the supplied product.

23 AREA OF APPLICATION

- 23.1 Clauses 4, 6 and 10-17 of these terms of sale and delivery apply equally to concrete pumping and associated services and to the delivery of ready-mixed concrete. For the provision of concrete pumping services, the conditions in Clauses 18-22 take precedence over the other conditions of the terms of sale and delivery.

GÆLDENDE FRA 1. JANUAR 2026

SALES

Private customers with order-related enquiries should contact Customer Services



Flemming Grand
Area Sales Manager
+45 26 88 49 84
flemming.grand@unicon.dk
North, Mid and West Jutland



René Fournaise
Area Sales Manager
+45 26 88 49 58
rene.fournaise@unicon.dk
Funen and South Jutland



Jesper Falk
Area Sales Manager
+45 21 41 91 01
jesper.falk@unicon.dk
East Jutland



Thomas Hemmingsen
Area Sales Manager
+45 20 29 27 64
thomas.hemmingsen@unicon.dk
Copenhagen and North Zealand



Christina Skjærup
Area Sales Manager
+45 26 88 53 55
christina.skjaerup@unicon.dk
South Zealand



Pernille Graasbøll
Account Manager
+45 26 88 49 21
pernille.graasboell@unicon.dk



Allan Dahl
Sales Manager
+45 26 89 13 00
allan.dahl@unicon.dk



Keld Pedersen
Key Account Manager
+45 26 88 49 33
keld.pedersen@unicon.dk
Jutland and Funen



Lars Haupt
Key Account Manager
+45 26 86 31 69
lars.haupt@unicon.dk
Zealand

CUSTOMER SERVICES - Telephone: 73 73 87 87 E-mail: kundecenter@unicon.dk

Customer Services handle enquiries from private individuals and all enquiries that do not relate to orders for concrete.



Sanne Kold
Sales Coordinator



Carina Halkier
Sales Coordinator



Maj Falsig
Sales Coordinator



Jeanette Wiese Johansen
Sales Coordinator



Alexander Filso Johansson
Sales trainee

DISPOSITION

Disposition handles all enquiries that relate to the ordering and delivery of concrete and concrete pumping.

DispoCenter Region Nord +45 70 10 05 60
DispoCenter Region Syd +45 70 10 05 70
DispoCenter Region Øst +45 70 13 03 60

**OPTION OF
ONLINE ORDERING**

AT: MIT.UNICON.DK

PAYMENT

Unicon A/S - Co. Reg. No.: 16 06 49 39

Account No.: Danske Bank 3100 0005401828
Please contact our administration for further info.
Telephone: +45 70 10 05 90 Email: info@unicon.dk

CLAIMS

For claims, scan the QR code:



TO SEE AN UPDATED VERSION OF THE PRICE LIST GO TO UNICON.DK





ORDERING CONCRETE AND CONCRETE PUMPS

Call the plant directly using the post code via “quick-call” +45 70 13 03 01



Unicon A/S
Ulvehavevej 61
7100 Vejle
+45 70 10 05 90
info@unicon.dk
www.unicon.dk

Unicon A/S is Denmark's largest producer and supplier of ready-mixed concrete. Unicon has over 33 concrete plants at its disposal, and employs around 400 workers. Unicon's history goes all the way back to 1926.