

PRICE LIST
READY-MIXED CONCRETE
17 APRIL 2023



UNICON'S PRODUCT PROGRAMME

Includes standard products and functional concretes, produced and verified in accordance with current product standards. In addition, a number of functional concrete are declared according to own declaration.

Concrete subjected to exposure classes XS2, XS3, XF2, XF4 or XA3 must be specially ordered, as RAPID cement CEM I 52.5 N (LA) or Aalborg SOLID cement CEM II/A-V 42.5 N (EA) will be used here. The table below indicates the environmental impacts/exposure classes, the various types of concrete are suitable for.

ENVIRONMENTAL IMPACT	PASSIVE		MODERATE					AGGRESSIVE					EXTRA AGGRESSIVE					
	X0	XC1	XC2	XC3	XC4	XF1	XA1	XD1	XS1	XS2	XF2	XF3	XA2	XD2	XD3	XS3	XF4	XA3
CONSTRUCTION CONCRETE																		
STANDARD CONCRETE																		
UNI-GREEN® CONCRETE																		

■ OK
 ■ NOT OK
 ■ OK, BUT NOT IF USED FOR SWIMMING POOLS
 ■ OK, BUT NOT IF SULPHATE IS THE REASON FOR XA2/XA3

STANDARD PRODUCTS ACC. TO DS/EN 206 DK NA

DKK PER M³ EXCL. VAT

COMPRESSIVE STRENGTH CLASS CYLINDER-/DIE COMPRESSIVE STRENGTH	C12/15	C16/20	C20/25	C25/30	C30/37	C35/45	C30/37	C35/45	C35/45	C40/50
ENVIRONMENTAL IMPACT	Passive	Passive	Passive	Passive	Passive	Passive	Moderate	Moderate	Aggressive	Extra aggressive
SLUMP CONCRETE D _{MAX} 32 MM, SLUMP 40-120 MM	1,345	1,382	1,420	1,459	1,499	1,539	1,686	1,770	1,935	2,042
CO ₂ EQUIV. PER M ³	175 kg	205 kg	220 kg	245 kg	275 kg	305 kg	290 kg	315 kg	370 kg	440 kg
LAVA BETON® (SCC-CONCRETE) D _{MAX} 16 MM, LIQUID SLUMP 550 MM			1,579	1,616	1,657	1,699	1,795	1,960	2,067	2,177
CO ₂ EQUIV. PER M ³			230 kg	280 kg	300 kg	350 kg	310 kg	330 kg	400 kg	470 kg

FUNCTIONAL CONCRETES ACC. TO DS/EN 206 DK NA

DKK PER M³ EXCL. VAT

COMPRESSIVE STRENGTH CLASS CYLINDER-/DIE COMPRESSIVE STRENGTH	C20/25	C25/30	C30/37	C35/45	C30/37	C35/45	C35/45	C40/50
ENVIRONMENTAL IMPACT	Passive	Passive	Passive	Passive	Moderate	Moderate	Aggressive	Extra aggressive
FLOOR CONCRETE G1 (COARSE AGG.-M) D _{MAX} 32 MM, SLUMP 80-120 MM				1,634				
CO ₂ EQUIV. PER M ³				270 kg				
FLOOR CONCRETE G1 (COARSE AGG.-A) D _{MAX} 32 MM, SLUMP 80-120 MM				1,713				
CO ₂ EQUIV. PER M ³				270 kg				
FLOOR CONCRETE G2 (COARSE AGG.-M) D _{MAX} 32 MM, SLUMP 80-120 MM					1,700			
CO ₂ EQUIV. PER M ³					290 kg			
FLOOR CONCRETE G2 (COARSE AGG.-E) D _{MAX} 32 MM, SLUMP 80-120 MM						1,778		
CO ₂ EQUIV. PER M ³						290 kg		
FLOOR CONCRETE G3 (COARSE AGG.-E) D _{MAX} 32 MM, SLUMP 80-120 MM							1,851	
CO ₂ EQUIV. PER M ³							320 kg	
CONCRETE FOR CONSTRUCTION JOINTS D _{MAX} 8 MM, SLUMP 200-240 MM		1,714	1,757	1,800	1,881		2,150	2,262
CO ₂ EQUIV. PER M ³		280 kg	310 kg	350 kg	340 kg		390 kg	450 kg
CONSTRUCTION CONCRETE D _{MAX} 32 MM, SLUMP 60-120 MM,							2,092	2,197
CO ₂ EQUIV. PER M ³							365 kg	405 kg

UNI-GREEN®

PRODUCTS WITH 25 % CO₂-REDUCTION

UNI-Green product programme includes our most sustainable concretes with a reduced CO₂ footprint of 25 % compared to equivalent concretes with RAPID cement.

CO₂ EQUIV. PR M3 CONCRETE

The CO₂ footprint is indicated for life cycle stages A1-A3 (The Product Phase), cf. EN 15804. It is based on an average mix design across all of our plants, where the value is rounded up to a multiple of 5.

SUSTAINABLE CONVERSION

At Unicon, our focus is on converting to a more sustainable production and company in general.

Via the QR code, or the link below, you can read more about how Unicon is working towards being more sustainable within a number of important areas.

www.unicon.dk/baeredygtig-omstilling



UNI-GREEN® STANDARD PRODUCTS ACC. TO DS/EN 206 DK NA

DKK PER M³ EXCL. VAT

COMPRESSIVE STRENGTH CLASS CYLINDER-/DIE COMPRESSIVE STRENGTH	C12/15	C16/20	C20/25	C25/30	C30/37	C35/45	C30/37	C35/45	C35/45	C40/50
ENVIRONMENTAL IMPACT	Passive	Passive	Passive	Passive	Passive	Passive	Moderate	Moderate	Aggressive	Extra aggressive
UNI-GREEN® / SLUMP CONCRETE D _{MAX} 32 MM, SLUMP 40-120 MM	1,345	1,382	1,420	1,459	1,499	1,539	1,686	1,770	1,935	2,042
CO ₂ EQUIV. PER M ³	135 kg	155 kg	165 kg	185 kg	210 kg	230 kg	220 kg	240 kg	280 kg	330 kg
UNI-GREEN® / LAVA BETON® (SCC-CONCRETE) D _{MAX} 16 MM, LIQUID SLUMP 550 MM			1,579	1,616	1,657	1,699	1,795	1,960	2,067	2,177
CO ₂ EQUIV. PER M ³			175 kg	210 kg	225 kg	265 kg	235 kg	250 kg	300 kg	355 kg

UNI-GREEN FUNCTIONAL CONCRETES ACC. TO DS/EN 206 DK NA

DKK PER M³ EXCL. VAT

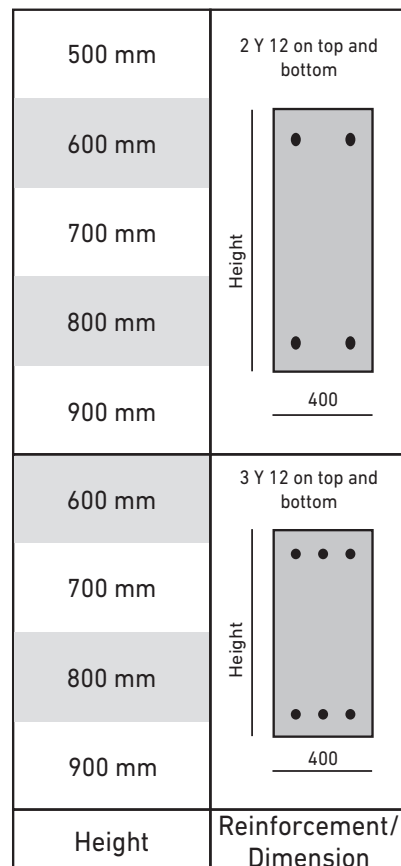
COMPRESSIVE STRENGTH CLASS CYLINDER-/DIE COMPRESSIVE STRENGTH	C20/25	C25/30	C30/37	C35/45	C30/37	C35/45	C35/45	C40/50
ENVIRONMENTAL IMPACT	Passive	Passive	Passive	Passive	Moderate	Moderate	Aggressive	Extra aggressive
UNI-GREEN® / FLOOR CONCRETE G1 (COARSE AGG.-M) D _{MAX} 32 MM, SLUMP 80-120 MM				1,634				
CO ₂ EQUIV. PER M ³				205 kg				
UNI-GREEN® / FLOOR CONCRETE G1 (COARSE AGG.-A) D _{MAX} 32 MM, SLUMP 80-120 MM				1,713				
CO ₂ EQUIV. PER M ³				205 kg				
UNI-GREEN® / FLOOR CONCRETE G2 (COARSE AGG.-M) D _{MAX} 32 MM, SLUMP 80-120 MM					1,700			
CO ₂ EQUIV. PER M ³					220 kg			
UNI-GREEN® / FLOOR CONCRETE G2 (COARSE AGG.-E) D _{MAX} 32 MM, SLUMP 80-120 MM						1,778		
CO ₂ EQUIV. PER M ³						220 kg		
UNI-GREEN® / FLOOR CONCRETE G3 (COARSE AGG.-E) D _{MAX} 32 MM, SLUMP 80-120 MM							1,851	
CO ₂ EQUIV. PER M ³							240 kg	
UNI-GREEN® / CONCRETE FOR CONSTRUCTION JOINTS D _{MAX} 8 MM, SLUMP 200-240 MM		1,714	1,757	1,800	1,881		2,150	2,262
CO ₂ EQUIV. PER M ³		210 kg	235 kg	265 kg	255 kg		295 kg	340 kg

FUNCTIONAL CONCRETES ACC. TO DS/EN 206 DK NA

DKK PER M³ EXCL. VAT

COMPRESSIVE STRENGTH CLASS CYLINDER-/DIE COMPRESSIVE STRENGTH	C20/25	C25/30	C30/37	C35/45	C30/37	C35/45	C40/50
ENVIRONMENTAL IMPACT	Passive	Passive	Passive	Passive	Moderate	Aggressive	Extra aggressive
UNI-WINTER[®] - CONCRETE FOR CONSTRUCTION JOINTS > 0 ° C D _{MAX} 8 MM, SLUMP 200-240 MM							2,768
<i>CO₂ EQUIV. PER M³</i>							370 kg
UNI-WINTER[®] - CONCRETE FOR CONSTRUCTION JOINTS > -5 ° C D _{MAX} 8 MM, SLUMP 200-240 MM							3,137
<i>CO₂ EQUIV. PER M³</i>							370 kg
UNI-DRY[®] V/C < 0.40 D _{MAX} 16 MM, CLASS A MATERIALS, SLUMP 60-120 MM				2,050			
<i>CO₂ EQUIV. PER M³</i>				430 kg			
UNI-DRY[®] LAVA SCC-CONCRETE V/C < 0.40 D _{MAX} 16 MM, CLASS A MATERIALS, SLUMP 550 MM				2,149			
<i>CO₂ EQUIV. PER M³</i>				440 kg			
UNI-DRY[®] EXTRA V/C < 0.35 D _{MAX} 16 MM, CLASS A MATERIALS, SLUMP 60-120 MM				2,150			
<i>CO₂ EQUIV. PER M³</i>				490 kg			
UNI-DRY[®] EXTRA LAVA SCC-CONCRETE V/C < 0.35 D _{MAX} 16 MM, CLASS A MATERIALS, SLUMP 550 MM				2,256			
<i>CO₂ EQUIV. PER M³</i>				490 kg			
UNI-READY[®] LAVA SCC-CONCRETE D _{MAX} 16 MM, LIQUID SLUMP 550 MM, STEEL FIBRE	1,823	1,859			2,039		
<i>CO₂ EQUIV. PER M³</i>	230 kg	270 kg			300 kg		
UNI-READY[®] G1 M32 D _{MAX} 32 MM, SLUMP 60-120 MM, STEEL FIBRE		1,877					
<i>CO₂ EQUIV. PER M³</i>		260 kg					
UNI-READY[®] G1 M16 D _{MAX} 16 MM, SLUMP 60-120 MM, STEEL FIBRE		1,946					
<i>CO₂ EQUIV. PER M³</i>		260 kg					
UNI-WALL D _{MAX} 16 MM, LIQUID SLUMP 620 MM							2,198
<i>CO₂ EQUIV. PER M³</i>							420 kg

UNI-FUNDA[®] - 2Y 500 D _{MAX} 32 MM, PASSIVE ENVIRONMENTAL IMPACT, SLUMP 60-120 MM	1,835
<i>CO₂ EQUIV. PER M³</i>	240 kg
UNI-FUNDA[®] - 2Y 600 D _{MAX} 32 MM, PASSIVE ENVIRONMENTAL IMPACT, SLUMP 60-120 MM	1,697
<i>CO₂ EQUIV. PER M³</i>	240 kg
UNI-FUNDA[®] - 2Y 700 D _{MAX} 32 MM, PASSIVE ENVIRONMENTAL IMPACT, SLUMP 60-120 MM	1,681
<i>CO₂ EQUIV. PER M³</i>	240 kg
UNI-FUNDA[®] - 2Y 800 D _{MAX} 32 MM, PASSIVE ENVIRONMENTAL IMPACT, SLUMP 60-120 MM	1,661
<i>CO₂ EQUIV. PER M³</i>	240 kg
UNI-FUNDA[®] - 2Y 900 D _{MAX} 32 MM, PASSIVE ENVIRONMENTAL IMPACT, SLUMP 60-120 MM	1,641
<i>CO₂ EQUIV. PER M³</i>	240 kg
UNI-FUNDA[®] - 3Y 600 D _{MAX} 32 MM, PASSIVE ENVIRONMENTAL IMPACT, SLUMP 60-120 MM	1,974
<i>CO₂ EQUIV. PER M³</i>	240 kg
UNI-FUNDA[®] - 3Y 700 D _{MAX} 32 MM, PASSIVE ENVIRONMENTAL IMPACT, SLUMP 60-120 MM	1,918
<i>CO₂ EQUIV. PER M³</i>	240 kg
UNI-FUNDA[®] - 3Y 800 D _{MAX} 32 MM, PASSIVE ENVIRONMENTAL IMPACT, SLUMP 60-120 MM	1,835
<i>CO₂ EQUIV. PER M³</i>	240 kg
UNI-FUNDA[®] - 3Y 900 D _{MAX} 32 MM, PASSIVE ENVIRONMENTAL IMPACT, SLUMP 60-120 MM	1,808
<i>CO₂ EQUIV. PER M³</i>	240 kg



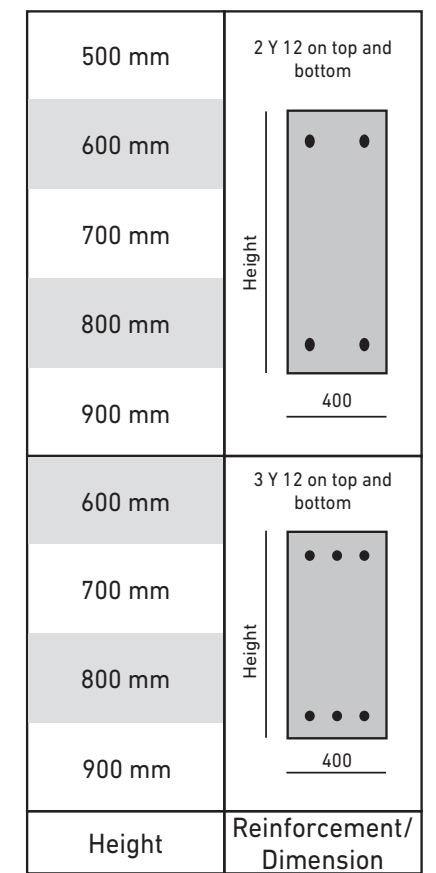
UNI-GREEN[®] FUNCTIONAL CONCRETES ACC. TO DS/EN 206 DK NA



DKK PER M³ EXCL. VAT

COMPRESSIVE STRENGTH CLASS CYLINDER-/DIE COMPRESSIVE STRENGTH	C20/25	C25/30	C30/37	C35/45	C30/37	C35/45	C40/50
ENVIRONMENTAL IMPACT	Passive	Passive	Passive	Passive	Moderate	Aggressive	Extra aggressive
UNI-GREEN[®] / UNI-WINTER[®] - CONCRETE FOR CONSTRUCTION JOINTS > 0 ° C D _{MAX} 8 MM, SLUMP 200-240 MM							2,768
<i>CO₂ EQUIV. PER M³</i>							280 kg
UNI-GREEN[®] / UNI-WINTER[®] - CONCRETE FOR CONSTRUCTION JOINTS > -5 ° C D _{MAX} 8 MM, SLUMP 200-240 MM							3,137
<i>CO₂ EQUIV. PER M³</i>							280 kg
UNI-GREEN[®] / UNI-DRY[®] V/C < 0.40 D _{MAX} 16 MM, CLASS A MATERIALS, SLUMP 60-120 MM				2,050			
<i>CO₂ EQUIV. PER M³</i>				325 kg			
UNI-GREEN[®] / UNI-DRY[®] LAVA SCC-CONCRETE V/C < 0.40 D _{MAX} 16 MM, CLASS A MATERIALS, SLUMP 550 MM				2,149			
<i>CO₂ EQUIV. PER M³</i>				330 kg			
UNI-GREEN[®] / UNI-DRY[®] EXTRA V/C < 0.35 D _{MAX} 16 MM, CLASS A MATERIALS, SLUMP 60-120 MM				2,150			
<i>CO₂ EQUIV. PER M³</i>				370 kg			
UNI-GREEN[®] / UNI-DRY[®] EXTRA LAVA SCC-CONCRETE V/C < 0.35 D _{MAX} 16 MM, CLASS A MATERIALS, SLUMP 550 MM				2,256			
<i>CO₂ EQUIV. PER M³</i>				370 kg			
UNI-GREEN[®] / UNI-READY[®] LAVA SCC-CONCRETE D _{MAX} 16 MM, LIQUID SLUMP 550 MM, STEEL FIBRE	1,823	1,859			2,039		
<i>CO₂ EQUIV. PER M³</i>	175 kg	205 kg			225 kg		
UNI-GREEN[®] / UNI-READY[®] G1 M32 D _{MAX} 32 MM, SLUMP 60-120 MM, STEEL FIBRE		1,877					
<i>CO₂ EQUIV. PER M³</i>		195 kg					
UNI-GREEN[®] / UNI-READY[®] G1 M16 D _{MAX} 16 MM, SLUMP 60-120 MM, STEEL FIBRE		1,946					
<i>CO₂ EQUIV. PER M³</i>		195 kg					
UNI-GREEN[®] / UNI-WALL D _{MAX} 16 MM, LIQUID SLUMP 620 MM							2,198
<i>CO₂ EQUIV. PER M³</i>							315 kg

UNI-GREEN[®] / UNI-FUNDA[®] - 2Y 500 D _{MAX} 32 MM, PASSIVE ENVIRONMENTAL IMPACT, SLUMP 60-120 MM	1,835
<i>CO₂ EQUIV. PER M³</i>	180 kg
UNI-GREEN[®] / UNI-FUNDA[®] - 2Y 600 D _{MAX} 32 MM, PASSIVE ENVIRONMENTAL IMPACT, SLUMP 60-120 MM	1,697
<i>CO₂ EQUIV. PER M³</i>	180 kg
UNI-GREEN[®] / UNI-FUNDA[®] - 2Y 700 D _{MAX} 32 MM, PASSIVE ENVIRONMENTAL IMPACT, SLUMP 60-120 MM	1,681
<i>CO₂ EQUIV. PER M³</i>	180 kg
UNI-GREEN[®] / UNI-FUNDA[®] - 2Y 800 D _{MAX} 32 MM, PASSIVE ENVIRONMENTAL IMPACT, SLUMP 60-120 MM	1,661
<i>CO₂ EQUIV. PER M³</i>	180 kg
UNI-GREEN[®] / UNI-FUNDA[®] - 2Y 900 D _{MAX} 32 MM, PASSIVE ENVIRONMENTAL IMPACT, SLUMP 60-120 MM	1,641
<i>CO₂ EQUIV. PER M³</i>	180 kg
UNI-GREEN[®] / UNI-FUNDA[®] - 3Y 600 D _{MAX} 32 MM, PASSIVE ENVIRONMENTAL IMPACT, SLUMP 60-120 MM	1,974
<i>CO₂ EQUIV. PER M³</i>	180 kg
UNI-GREEN[®] / UNI-FUNDA[®] - 3Y 700 D _{MAX} 32 MM, PASSIVE ENVIRONMENTAL IMPACT, SLUMP 60-120 MM	1,918
<i>CO₂ EQUIV. PER M³</i>	180 kg
UNI-GREEN[®] / UNI-FUNDA[®] - 3Y 800 D _{MAX} 32 MM, PASSIVE ENVIRONMENTAL IMPACT, SLUMP 60-120 MM	1,835
<i>CO₂ EQUIV. PER M³</i>	180 kg
UNI-GREEN[®] / UNI-FUNDA[®] - 3Y 900 D _{MAX} 32 MM, PASSIVE ENVIRONMENTAL IMPACT, SLUMP 60-120 MM	1,808
<i>CO₂ EQUIV. PER M³</i>	180 kg



FUNCTIONAL CONCRETES ACC. TO DS/EN 206 DK NA

DKK PER M³ EXCL. VAT

COMPRESSIVE STRENGTH CLASS CYLINDER-/DIE COMPRESSIVE STRENGTH	C35/45
ENVIRONMENTAL IMPACT	Aggressive
UNI-DARK S6 - 6% COLOUR DMAX 16 MM, SLUMP 60-120 MM CO ₂ EQUIV. PER M ³	3,084 410 kg
UNI-DARK S10 - 10% COLOUR DMAX 16 MM, SLUMP 60-120 MM CO ₂ EQUIV. PER M ³	3,084 410 kg
UNI-BRIGHT S4 - 4% COLOUR DMAX 16 MM, SLUMP 60-120 MM, STEEL FIBRE CO ₂ EQUIV. PER M ³	3,701 470 kg
UNI-BRIGHT S6 - 6% COLOUR DMAX 16 MM, SLUMP 60-120 MM, WHITE CEMENT CO ₂ EQUIV. PER M ³	3,701 470 kg
UNI-LIGHT CLASSIC [®] DMAX 16 MM, SLUMP 60-120 MM, WHITE CEMENT CO ₂ EQUIV. PER M ³	2,838 475 kg

FUNCTIONAL CONCRETES ACC. TO OWN DECLARATION

DKK PER M³ EXCL. VAT

COMPRESSIVE STRENGTH CYLINDRICAL COMPRESSIVE STRENGTH MPa	12	16	20	25	30	35	40
CEMENT MORTAR DMAX 4 MM, CLASS P MATERIALS, SLUMP 40-120 MM CO ₂ EQUIV. PER M ³	1,508	1,552	1,594	1,638	1,682	1,725	
	260 kg	310 kg	340 kg	390 kg	430 kg	560 kg	
TOPPING CONCRETE DMAX 8 MM, STONE MIN. CLASS. M, SLUMP 40-200 MM CO ₂ EQUIV. PER M ³		1,568	1,611	1,655	1,699		
		260 kg	280 kg	320 kg	370 kg		
KERB CONCRETE DMAX 32 MM CO ₂ EQUIV. PER M ³	1,336	1,374	1,417	1,458	1,498		
	150 kg	170 kg	190 kg	200 kg	220 kg		

FUNCTIONAL CONCRETES ACC. TO OWN DECLARATION

DKK PER M³ EXCL. VAT

UNI-FILL™ PIPE PASTE MINERAL BONDING AGENTS AND WATER VERY FLUID CONSISTENCY CO ₂ EQUIV. PER M ³	1,786 480 kg
UNI-FILL™ PIPE FILING DMAX 8 MM, CLASS P MATERIALS, SLUMP 180-250 MM CO ₂ EQUIV. PER M ³	1,461 85 kg
UNI-DRÆNBETON E08 (PERVIOUS CONCRETE) DMAX 8 MM, CLASS E MATERIALS CO ₂ EQUIV. PER M ³	1,715 220 kg
UNI-DRÆNBETON P16 (PERVIOUS CONCRETE) DMAX 16 MM, CLASS P MATERIALS CO ₂ EQUIV. PER M ³	1,458 220 kg

UNI-GREEN[®] FUNCTIONAL CONCRETES ACC. TO DS/EN 206 DK NADKK PER M³ EXCL. VAT

COMPRESSIVE STRENGTH CLASS CYLINDER-/DIE COMPRESSIVE STRENGTH	C35/45
ENVIRONMENTAL IMPACT	Aggressive
UNI-GREEN[®] / UNI-DARK S6 - 6% COLOUR DMAX 16 MM, SLUMP 60-120 MM CO ₂ EQUIV. PER M ³	3,084 310 kg
UNI-GREEN[®] / UNI-DARK S10 - 10% COLOUR DMAX 16 MM, SLUMP 60-120 MM CO ₂ EQUIV. PER M ³	3,084 310 kg

UNI-GREEN[®] FUNCTIONAL CONCRETES ACC. TO OWN DECLARATIONDKK PER M³ EXCL. VAT

COMPRESSIVE STRENGTH CYLINDRICAL COMPRESSIVE STRENGTH MPa	12	16	20	25	30	35	40
UNI-GREEN[®] / CEMENT MORTAR DMAX 4 MM, CLASS P MATERIALS, SLUMP 40-120 MM CO ₂ EQUIV. PER M ³	1,508	1,552	1,594	1,638	1,682	1,725	
	195 kg	235 kg	255 kg	295 kg	325 kg	420 kg	
UNI-GREEN[®] / TOPPING CONCRETE DMAX 8 MM, STONE MIN. CLASS. M, SLUMP 40-200 MM CO ₂ EQUIV. PER M ³		1,568	1,611	1,655	1,699		
		195 kg	210 kg	240 kg	280 kg		
UNI-GREEN[®] / KERB CONCRETE DMAX 32 MM IF POSSIBLE 100% RECYCLING ALLOWANCE, 4-16 MM CO ₂ EQUIV. PER M ³	1,336	1,374	1,417	1,458	1,498		
	115 kg	130 kg	145 kg	150 kg	165 kg		

UNI-GREEN[®] FUNCTIONAL CONCRETES ACC. TO OWN DECLARATIONDKK PER M³ EXCL. VAT

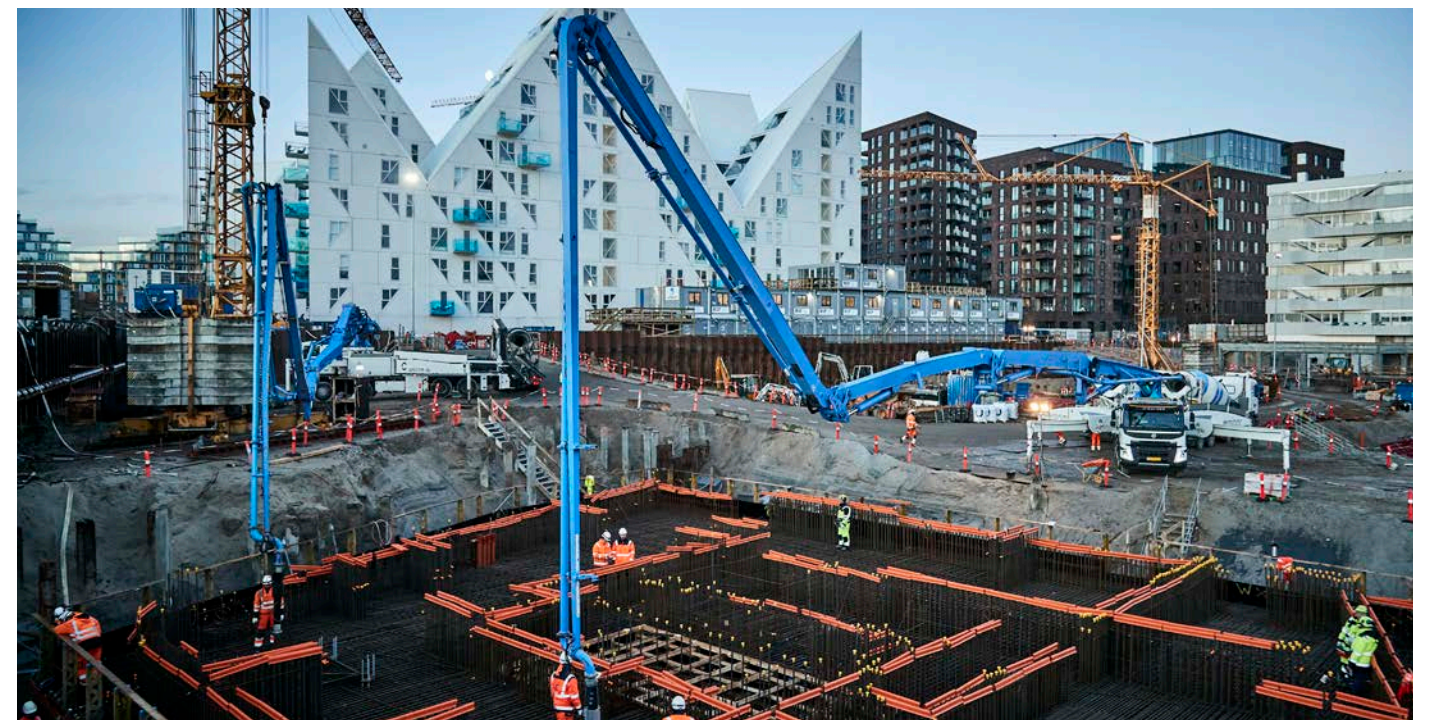
UNI-GREEN[®] / UNI-FILL™ PIPE PASTE MINERAL BONDING AGENTS AND WATER VERY FLUID CONSISTENCY CO ₂ EQUIV. PER M ³	1,786 360 kg
UNI-GREEN[®] / UNI-FILL™ PIPE FILING DMAX 8 MM, CLASS P MATERIALS, SLUMP 180-250 MM CO ₂ EQUIV. PER M ³	1,461 65 kg
UNI-GREEN[®] / UNI-DRÆNBETON E08 (PERVIOUS CONCRETE) DMAX 8 MM, CLASS E MATERIALS CO ₂ EQUIV. PER M ³	1,715 165 kg
UNI-GREEN[®] / UNI-DRÆNBETON P16 (PERVIOUS CONCRETE) DMAX 16 MM, CLASS P MATERIALS CO ₂ EQUIV. PER M ³	1,458 165 kg

ADDITIONAL SERVICES

SLUMP 130-160 MM	DKK per m ³	52
SLUMP 170-200 MM	DKK per m ³	92
SLUMP 210-240 MM	DKK per m ³	113
COARSE AGGREGATE DMAX 8 MM	DKK per m ³	87
COARSE AGGREGATE DMAX 16 MM	DKK per m ³	69
COARSE AGGREGATE CLASS M	DKK per m ³	95
COARSE AGGREGATE CLASS A	DKK per m ³	170
COARSE AGGREGARE CLASS E	DKK per m ³	170
<hr/>		
STRENGTH ACCELERATOR (SPECIAL PRODUCTS ONLY)	Call for a price	
SET ACCELERATING AGENT (SHORTENS THE SETTING TIME)	DKK per m ³	91
SET RETARDING AGENT	DKK per m ³	71
EXTENDED CONTROL CLASS	DKK per m ³	25
CONCRETE WITHOUT POZZOLANES (POZZOLANIC ASH)	DKK per m ³	50
LOW ALKALI, SULPHATE-RESISTANT CEMENT	DKK per m ³	245
CONCRETE WITH ADDED STEEL OR PLASTIC FIBRE	Call for a price	
<hr/>		
CO ₂ SURCHARGE	DKK per m ³	37
ENERGY SURCHARGE	DKK per m ³	160
ENVIRONMENTAL SURCHARGE (ZERO-EMISSION UNLOADING WHERE POSSIBLE)	DKK per m ³	65
HEATED CONCRETE FROM 16 NOVEMBER UNTIL 15 MARCH. WINTER SURCHARGE IS INCLUDED.	DKK per m ³	110
WINTER SURCHARGE FROM 16 NOVEMBER UNTIL 15 MARCH.	DKK per m ³	65
<hr/>		
TEMPERATURE SIMULATION IN ACCORDANCE WITH SPECIFICATION	DKK per piece	2,850
UNI-SMARTROCK (STRENGTH DEVELOPMENT SENSOR)	DKK per piece	1,500
PREPARING PROJECT-SPECIFIC ENVIRONMENTAL PRODUCT DECLARATIONS (EPD'S) PER CONCRETE TYPE	DKK per piece	3,500
TECHNICAL ASSISTANCE/SITE INSPECTION	DKK per hour	1,500
ENGINEER SERVICE RATE	DKK per hour	1,300
MOBILE LABORATORY - ALTHOUGH MIN. 2 HOURS INCLUSIVE TRANSPORT	DKK per hour	1,245
<hr/>		
UNLOADING VIA CONVEYOR BELT	DKK per m ³	109
ALTHOUGH MINIMUM PER ORDER	DKK	545
LOADS BELOW 7 M ³ (BILLED PR M ³ UP TO 7M ³)	DKK per m ³	120
SELECTION OF 4-AXLED VEHICLE	DKK per m ³	30

ADDITIONAL SERVICES

HANDLING OF RESIDUAL CONCRETE/RETURN CONCRETE, INCLUDING RECYCLING SITE FEE – SETTLED PER WHOLE M ³	DKK per m ³	645
<hr/>		
PLANNED EXTRA TIME ON SITE (INVOICED PER STARTED 15 MIN.)	DKK per 15 min.	190
UNPLANNED EXTRA TIME ON SITE (INVOICED PER STARTED 15 MIN.)	DKK per 15 min.	340
FOR LOADS UP TO 7 M ³ THE MAXIMUM FREE TIME ON SITE IS 30 MIN. AFTER THIS FREE TIME ON SITE INCREASES BY 3 MIN. PR. M ³ ABOVE 7 M ³		
TIME ON SITE IS CALCULATED FROM ARRIVAL AT THE BUILDING SITE UNTIL UNLOADING HAS BEEN COMPLETED.		
<hr/>		
FEE FOR LATE CANCELLATION. THE ACTUAL COSTS, ALTHOUGH MINIMUM	DKK per m ³	62
<hr/>		
PICK UP AT THE PLANT	DKK	250
<hr/>		
OPENING OF PLANT BY SPECIAL AGREEMENT (EXCLUSIVE HOURLY FEES PER EMPLOYEE, MIN: 4 HOURS)		6,000
PRICE PER EMPLOYEE OUTSIDE NORMAL WORKING HOURS 15.00-20.00 ON WEEKDAYS	DKK per hour	386
PRICE PER EMPLOYEE OUTSIDE NORMAL WORKING HOURS 20.00-07.00 ON WEEKDAYS	DKK per hour	773
PRICE PER EMPLOYEE ALL HOURS ON SATURDAYS, SUNDAYS AND PUBLIC HOLIDAYS	DKK per hour	773
NORMAL OPENING TIMES FOR DELIVERY: MONDAY-THURSDAY FROM 07.00-15.00, FRIDAY FROM 07.00- 14.00.		
<hr/>		
UNICON WOULD LIKE TO POINT OUT THAT NOT ALL PRODUCTS AND SERVICES ARE AVAILABLE AT ALL PLANTS.		
ALL PRICES ARE EXCL. VAT		
WE RESERVE THE RIGHT TO MAKE CHANGES DUE TO PRINTING ERRORS.		



KEY ACCOUNT MANAGERS - BUSINESS ENQUIRIES ONLY, PRIVATE CUSTOMERS SHOULD CONTACT CUSTOMER SERVICE.

Allan Dahl
Sales Manager
26 89 13 00
allan.dahl@unicon.dk



Flemming Grand
Key Account Manager
26 88 49 84
flemming.grand@unicon.dk



René Fournaise
Key Account Manager
26 88 49 58
rene.fournaise@unicon.dk



Keld Fischer-Pedersen
Key Account Manager
26 88 49 33
keld.f.pedersen@unicon.dk



Lars Haupt
Key Account Manager
26 86 31 69
lars.haupt@unicon.dk



Jesper Matzen
Key Account Manager
21 41 91 01
jesper.matzen@unicon.dk



Lars Kahn Sørensen
Key Account Manager
29 40 75 83
lars.k.soerensen@unicon.dk

AREA MANAGERS IN CHARGE OF PRODUCTION

Henrik Walther Larsen
Area Manager
North, East and Central
Jutland
20 43 46 76
henrik.w.larsen@unicon.dk



Kent Florczak
Area Manager
Southern Jutland,
The Triangle and Funen
29 25 44 81
kent.florczak@unicon.dk



Jacob Christensen
Area Manager
Zealand
23 62 62 02
jacob.christensen@unicon.dk

LOGISTICS

Logistics handles all inquiries that concerns ordering and logistics of concrete and concrete pumping.

DispoCenter Region North	70 10 05 60
DispoCenter Region South	70 10 05 70
DispoCenter Region East	70 13 03 60

YOU ALWAYS HAVE THE OPTION TO ORDER REQUEST ONLINE ON UNICON.DK

PAYMENT

UNICON A/S - CVR (CRN) NO.: 16 06 49 39

Account no.: Danske Bank 3100 0005401828

Please contact our administration for further information. Tel: +45 70 10 05 90 e-mail: info@unicon.dk

FOR THE UPDATED VERSION OF THE PRICE LIST, SEE UNICON.DK

1 PRICES/VOLUMES

- 1.1 The prices are stated per m³ exclusive of VAT and environmental/ regulatory taxes valid on the day of delivery, free delivered at a delivery address within the normal market area of the plants.
- 1.2 The prices are based on delivery of full loads within the opening hours and delivery times specified in the pricelist. A surcharge will be calculated for delivery outside the specified hours as well as for delivery of volumes smaller than the quantities specified in the pricelist.
- 1.3 The concrete volume stated in the delivery note represents the volume of the concrete with the targeted air content.
- 1.4 On-site time exceeding the maximum time stated in the price list will be charged according to the current price list.
- 1.5 Unicon A/S will invoice all deliveries in accordance with the pricelist valid on the day of delivery.

2 PAYMENT

- 2.1 Up to date of invoice plus 8 days net (private customers).
- 2.2 Up to current month + 15 days net.
- 2.3 Interest is charged for late payments, in addition a reminder fee of up to DKK 100 is imposed when sending a written reminder, according to interest law.

3 DELIVERY

- 3.1 It is the buyer's responsibility to obtain the necessary permits for setting up in trafficked areas, and notify at the site where delivery takes place.
- 3.2 The delivery is delivered and unloaded at the place of use or as close to it as conditions allow. If the buyer requests delivery across surfaces with insufficient bearing capacity, all consequential damages are at the expense of the buyer.
- 3.3 The delivery time is when the delivery has arrived at the delivery address or been picked up at the factory.
- 3.4 We will strive to deliver within 15 mins. prior to, and up to 30 mins. after, the agreed delivery time.

4 CHANGES

- 4.1 Should the buyer wish to change the date of delivery for an order/part order in full discharge, the buyer must give such notice before 12.00h on the day before the agreed time of delivery.
- 4.2 Should the buyer wish to change ordered agreements, this is to be executed in writing.

5 INSPECTION UPON RECEIPT

Prior to unloading, the buyer shall check the specifications of the delivery note, and during unloading the buyer is to maintain visual control to make sure that the delivery is in accordance with the order. The buyer or his representative must sign the delivery note to confirm receipt of delivery and furthermore to confirm that the specifications of the delivery note are in accordance with the required specifications of the supply ordered by the buyer.

6 CONCRETE CONTROL

- 6.1 Unicon A/S' plants are certified by Dancert, which ensures that the supplies are in conformity with present standards and regulations.
- 6.2 Unicon A/S' quality control system is pursuant to DS/EN ISO 9001 and ensures that concrete quality and quality control are documented in conformity with present standards and regulations.
- 6.3 Individual results as well as the statistics of the results of the internal quality control are available to buyer subject to written agreement.
- 6.4 If no other written agreement has been made, Unicon A/S' internal quality control shall serve as documentation.
- 6.5 Unicon A/S guarantees that the delivered concrete on the date of delivery is - as a minimum - in accordance with the specifications of the delivery note.

7 USE OF PRODUCT AND FINISHING

- 7.1 Unicon A/S is without liability, if the buyer has ordered a concrete supply which is not suitable for the purpose or the casting conditions.
- 7.2 Unicon A/S is not liable for quality reduction, caused by premature desiccation, inadequate compression, covering or finishing. Unicon A/S is not liable for colour differences or other circumstances caused by change of specifications, including changes of the specifications made by Unicon A/S' material suppliers, in standing orders.
- 7.3 Any addition to the concrete on the buyer's behalf is at buyer's own risk.

8 LIABILITY FOR DEFECTS/WARRANTY LIABILITY

- 8.1 The supply is delivered with a 5-year supplier liability for defects in conformity with the regulations of AB 18, section 12 paragraph 5.
- 8.2 If the buyer is also the builder and carries out the work himself, the 5-year term is calculated from the date of delivery.
- 8.3 If a builder can prove that a claim for defects can only be put through to the buyer with large difficulties, the claim can be made directly on Unicon A/S.

9 PRODUCT LIABILITY

- 9.1 Unicon A/S is liable for damages, if it can be proved that the said damage is caused by a defective supply.
- 9.2 Unicon A/S has taken out product liability insurance.
- 9.3 Should Unicon A/S be subject to product liability against any third party, the buyer is obligated to indemnify Unicon A/S from that part of the claim for compensation, which exceeds DKK 15 million. In case of a trial, the buyer shall let himself be sued at the same court of law that is hearing the claim against Unicon A/S.

10 LIMITATION OF LIABILITY

In the event of liability for defects in a delivery (including product liability) and delay, Unicon A/S' liability does not include operating loss, loss of time, loss of profit or other indirect loss. In the event of liability for delay or defects in a delivery, Unicon A/S' liability cannot exceed the price of the delayed/defective delivery.

In the event of downtime, machine damage or other breakdown of concrete pumps, Unicon A/S assumes no liability and no compensation shall be paid.

11 COMPLAINTS

The buyer's written claim stating the nature and scope of the claim shall be handed over to Unicon A/S immediately after (no more than 10 days after delivery) that the buyer knew or ought to have known the circumstances causing the claim. If such notice is not given, any future claim will be forfeited.

12 FREEDOM OF LIABILITY (FORCE MAJEURE)

Unicon A/S is not liable for delays caused by circumstances mentioned in AB 18 section 39.

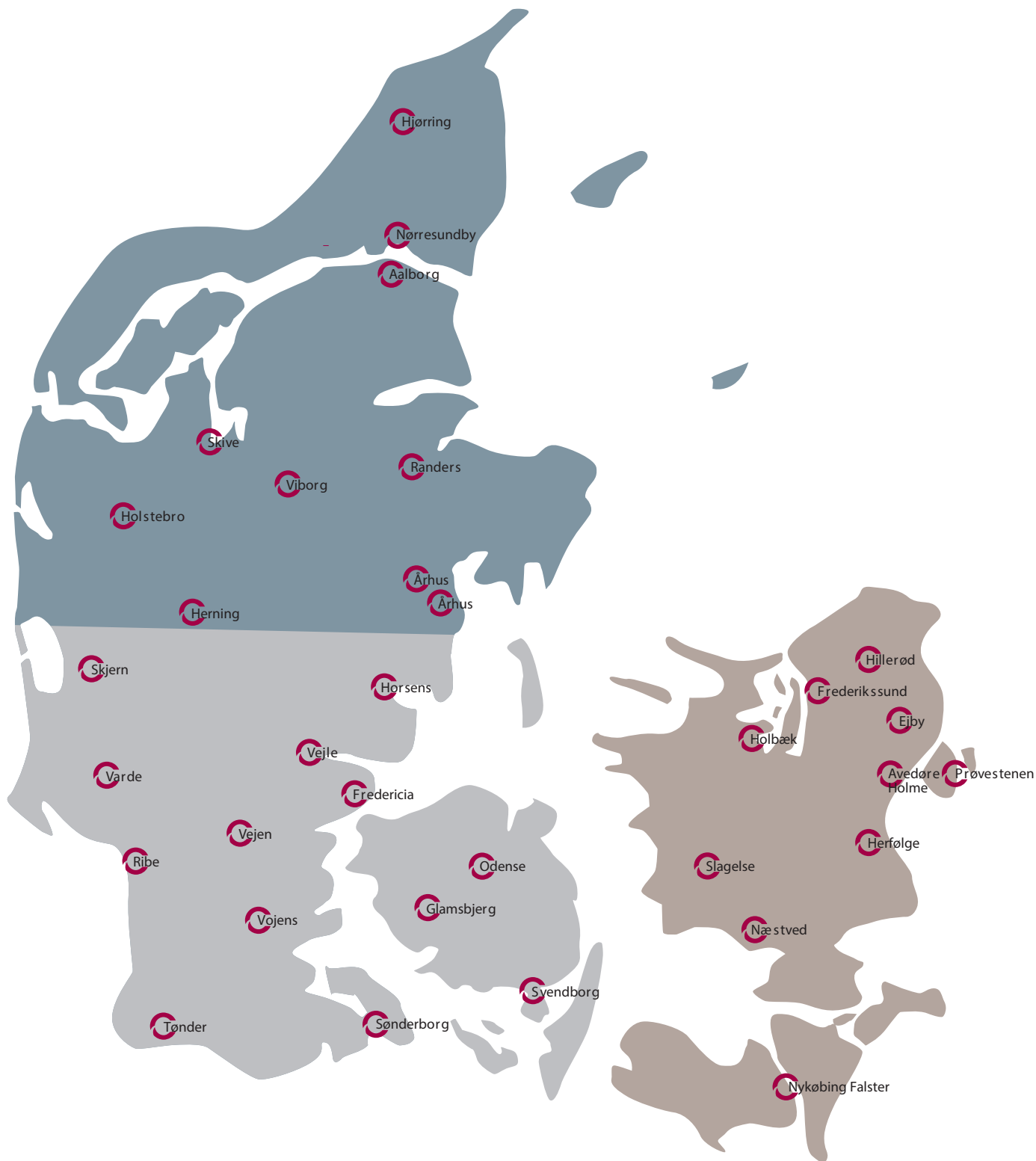
13 CONSULTING

Unicon A/S will provide consulting to the buyer to the best of its ability with regard to choice of products, their functions and suitability to specific purposes. It is expressly agreed that such technical consulting or assistance, which is provided without separate charge, does not make Unicon A/S liable or impose obligations with regard to such consulting and assistance, or for results achieved. Liability in addition to this is only accepted by Unicon A/S if Unicon A/S has provided separate written consulting to the buyer in the form of the preparation of actual calculations or in the form of separate written statements regarding the usability of what is sold for a specially indicated purpose to a buyer, which may not be expected to have sufficient professional knowledge in the area to independently evaluate the question of the product's suitability. Unicon A/S' liability is limited to no more than DKK 100,000 in case of incorrect consulting and does not cover operations loss, loss of time, loss of profit or other indirect loss. Unicon A/S is not liable for statements that are based on estimated assessments or an evaluation.

14 DISPUTES

Disputes, if any, between the parties shall be settled by arbitration at the Danish Court of Arbitration for the Building and Construction Industry.

Rev. November 2020



TO ORDER CONCRETE AND CONCRETE PUMPS

Contact the plant directly by using the postal code after calling the "quick call" number 70130301

- Call 70 10 05 60
- Call 70 10 05 70
- Call 70 13 03 60



Unicon A/S
Islands Brygge 43
DK-2300 Copenhagen S

+45 70 10 05 90
info@unicon.dk
www.unicon.dk

Unicon A/S is Denmark's largest producer and supplier of ready-mixed concrete. Unicon has 33 concrete plants and employs 400 people. Unicon's history dates back to 1926.